

# The TrueCommerce EDI Solution

## Makes Purchasing Integration Painless for Sage 100 ERP



### We Make EDI Painless!

TrueCommerce® EDI Solutions makes it painless to implement electronic data interchange (EDI), by delivering easy-to-use, robust and affordable solutions.

### BENEFITS

- ▶ TrueCommerce Transaction Manager is the only EDI solution exclusively endorsed and distributed by Sage
- ▶ Total EDI solution for Sage 100 ERP from one trusted source
- ▶ More than 12,000 companies improve business productivity daily with the TrueCommerce Trading Network
- ▶ Supports more than 92,000 trading partner maps with updates at no additional charge
- ▶ Unlimited, US-based support and no annual maintenance fees

**TrueCommerce Transaction Manager™** for Sage 100 ERP makes it easy and affordable to transact EDI with your suppliers, while making your business more efficient at the same time. The only solution exclusively endorsed and distributed by Sage, it includes everything you need to streamline and automate purchase order processing so you can place orders faster without sacrificing accuracy. The easy-to-use interface and robust integration ensure smooth alignment with your business processes.

Comprehensive integration with the Sage 100 ERP purchase order module (including purchase order, receipt of goods and receipt of invoice transactions) makes exchanging information between Sage 100 ERP and your TrueCommerce EDI solution seamless. Purchase orders, shipments and invoices become fully integrated, eliminating manual effort and reducing errors.

TrueCommerce Transaction Manager™ for Sage 100 ERP automates many everyday tasks, like importing inbound advance ship notices (ASNs) to receive against the original purchase order, and creating a receipt of invoice upon importing an invoice. In addition, built-in process controls ensure that key fields on your outbound EDI documents are complete before sending those transactions to suppliers – helping to minimize or eliminate errors.

The TrueCommerce Scheduler add-on further enhances this easy-to-use purchasing solution. TrueCommerce Scheduler automatically performs import and export functions for the integrated transactions that you specify. Scheduling automated transactions at a time that best fits your business needs saves you time and reduces manual effort, so you can focus on other important business processes.

**TRUECOMMERCE TRANSACTION MANAGER FEATURES AND BENEFITS FOR SAGE 100 ERP**

**Seamless Integration Your Business Can Rely On:**

- The TrueCommerce EDI solution integrates purchase order, receipt of goods and receipt of invoice transactions with Sage 100 ERP
- The integration leverages Sage 100 ERP's Business Objects Interface – the approach Sage recommends for the tightest and most robust integration
- Native support for Sage 100 ERP business logic ensures smooth integration with your business documents and eliminates the need to print or re-enter data

- You can import or export data between Sage 100 ERP and the TrueCommerce EDI solution in one click – or use TrueCommerce Scheduler to set up these functions automatically, without user intervention

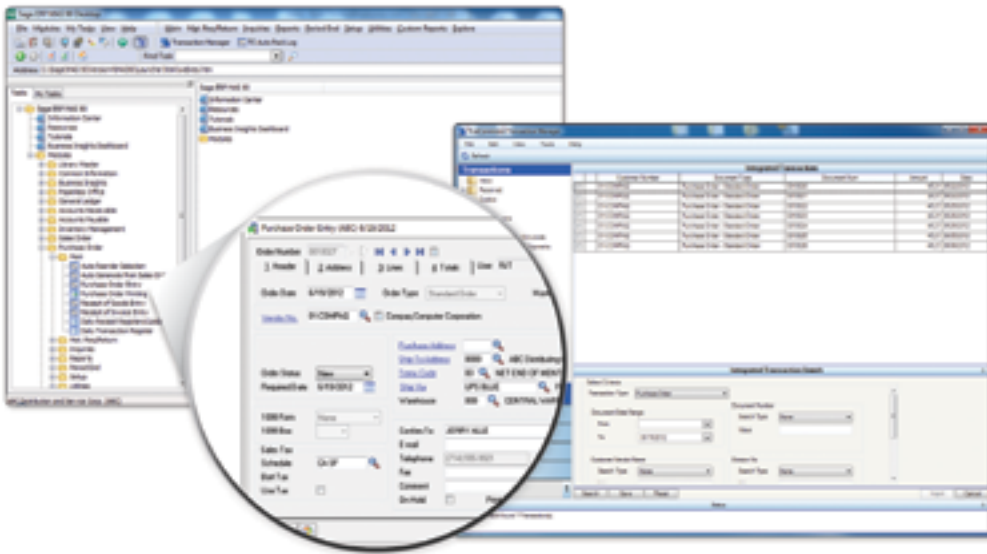
**Advanced Purchasing Integration Streamlines Collaboration with Suppliers:**

- The EDI system automatically imports inbound advance ship notices (ASNs) into Sage 100 ERP to receive against the original purchase order, saving time and reducing manual effort
- You can create multiple shipments against a single purchase order - helping you to track items shipped versus items you are still expecting
- Inbound invoices automatically create a receipt of invoice document, saving time and reducing errors

- You can assign your EDI shipments and invoices into batches when processing your receipt of goods and invoice documents

**Built-in Process Controls Reduce Errors and Accelerate Order Processing:**

- The TrueCommerce solution automatically ensures that all fields are valid before sending a transaction, and alerts you to invalid fields. Items shipped and invoiced are automatically validated against the original purchase order
- Vendor pricing is validated when you create an invoice, automatically comparing the EDI unit cost and the Sage unit cost. If they compare unequal you can assign either the Sage or EDI price, or prevent the invoice from being created
- Purchase orders imported from Transaction Manager into Sage 100 ERP are automatically validated against supplier requirements or purchase order maps, to ensure accuracy



TrueCommerce Transaction Manager™ for Sage 100 ERP makes it easy and affordable to transact EDI with your suppliers,

**ABOUT TRUECOMMERCE**

TrueCommerce revolutionizes trading partner connectivity, visibility, and collaboration by linking suppliers, retail hubs and end consumers in one global commerce network. From the factory to the warehouse, from distributor to retail storefront, achieve new levels of business connectivity and performance with the world's most complete commerce network.

Connect. Integrate. Accelerate.

**THE TRUECOMMERCE TEAM IS HERE TO HELP!**

If you have any questions regarding TrueCommerce, or how it applies to your business, our passionate, EDI focused team is here for you.

Call us today at **888.430.4489**

[www.truecommerce.com](http://www.truecommerce.com)

