

Exclusively Endorsed by Sage

TrueCommerce Transaction Manager™ for Sage 100 ERP



We Make EDI Painless!

We make it painless to implement Electronic Data Interchange (EDI) by making it affordable and easy-to-use.

BENEFITS

- ▶ TrueCommerce Transaction Manager™ is the only EDI solution exclusively endorsed and distributed by Sage
- ▶ End-to-end EDI solution for Sage 100 ERP, developed and supported by one trusted source
- ▶ Advanced integration automates sales orders, invoices and shipments as well as warehouse fulfillment documents
- ▶ Offers easy set-up, customer-specific configuration options and powerful auto-pack capabilities
- ▶ Trading partner mapping updates at no charge
- ▶ Unlimited US-based support, no annual maintenance fees, complimentary software upgrades and no annual contracts

TrueCommerce Transaction Manager™ for Sage 100 ERP makes it easy and affordable to comply with your customers' EDI requirements. This robust, integrated solution includes everything you need to streamline and automate sales order processing and warehouse fulfillment documents. The intuitive interface, low total cost of ownership and flexible configuration options help you maximize efficiency and customer satisfaction – liberating your business to focus on new opportunities!

TrueCommerce Transaction Manager for Sage 100 ERP automates many everyday tasks, like creating sales orders in Sage 100 ERP or sending invoices to your customers. Built-in process controls ensure that unit pricing, duplicate purchase order numbers and items are validated before processing transactions to Sage 100 ERP. You will be alerted when there are invalid fields which help to eliminate chargebacks from your customers and reduce turnaround time on orders.

The solution fully supports advance shipping notices (ASNs), including flexible auto-pack options specific to the customer or the item, and has the ability to create multiple shipments at once. Comprehensive remote warehouse integration lets you efficiently communicate with your third-party logistics (3PL) providers, allowing you to fulfill orders faster and with fewer errors.

The TrueCommerce Scheduler further enhances this robust solution. This software add-on automatically performs everyday tasks on your behalf at specific times resulting in reduced effort and improved efficiency.

TrueCommerce is the only EDI solution exclusively endorsed and distributed by Sage for Sage 100. A solution that is "endorsed by Sage" has passed a rigorous evaluation including strategic, technological and integration criteria. Endorsed solutions are certified to work with Sage's latest releases, and are from an organization that meets Sage's requirement of delivering an "exceptional customer experience".

TRUECOMMERCE TRANSACTION MANAGER FEATURES AND BENEFITS FOR SAGE 100 ERP

Advanced Integration for Unbeatable Efficiency and Customer Satisfaction:

- Integration leverages the native Sage Business Objects® Interface for optimal performance and scalability
- Minimal keystrokes required to process data between Sage 100 ERP and the TrueCommerce EDI solution

Advanced EDI Integration with the Sage 100 ERP Sales Order Module Streamlines Transactions and Reduces Effort:

- Integration includes sales order, shipment and invoice transactions; as well as warehouse documents such as outbound sales orders and inbound shipments
- Advance ship notice (ASN) integration includes the ability to auto-pack shipments by quantity or weight for key customers based on specific packaging rules

- Use shipment automation to create multiple shipments simultaneously, eliminating the need to create or package shipments individually
- TrueCommerce Electronic Labeling Plug-In, an optional software add-on, easily creates and prints UCC-128 labels to meet customer needs and streamline your shipping processes
- Transaction Manager's multi-company support lets businesses transact EDI through multiple companies in Sage 100 ERP, while making it easy to set up and define trading partners to interact with specific companies outlined in Sage 100 ERP

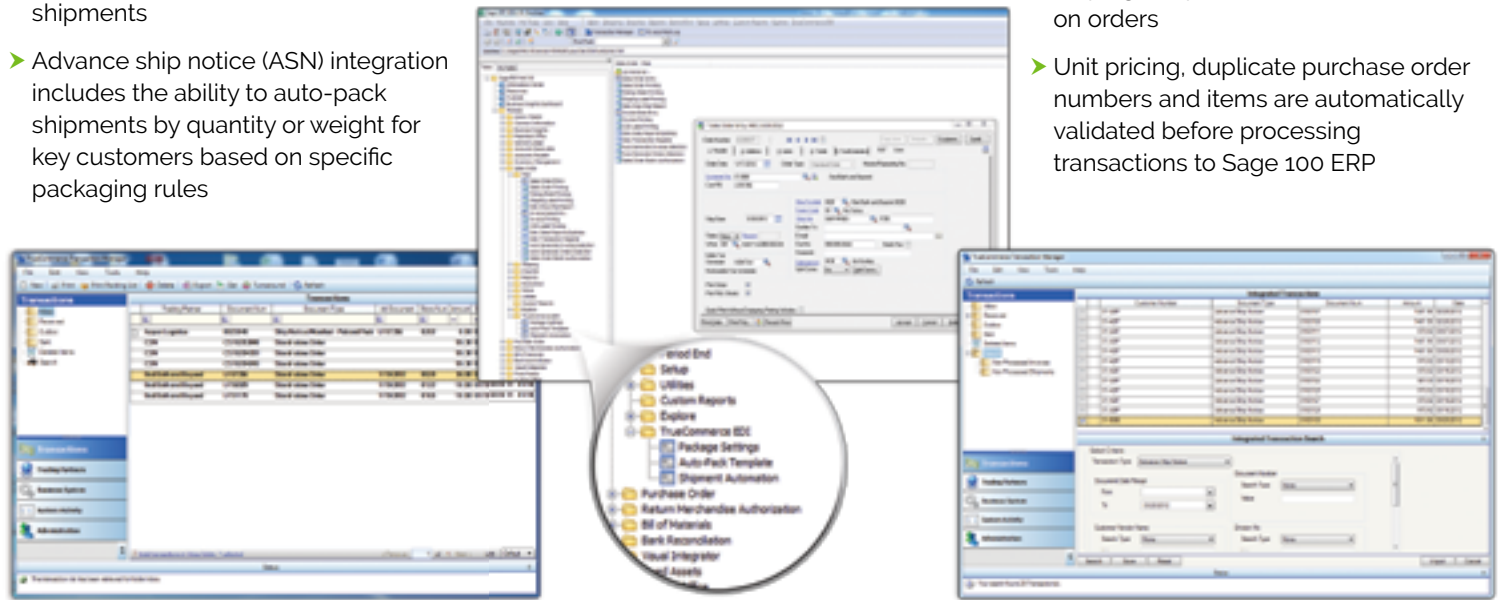
Warehouse Integration Automates Your Communications with 3PL Providers:

- Integrates outbound sales orders and inbound shipments for faster, more accurate order fulfillment

- Creates outbound advance ship notices from inbound shipment documents – no need to print or re-enter data
- Generate shipments within Sage 100 ERP from inbound shipment documents, including the package details
- Update lot numbers and serial numbers automatically from inbound shipments to save time and reduce errors

Built-in Process Controls Ensure Data Integrity, Reduce Errors and Minimize Chargebacks:

- Data exchanges between Sage 100 ERP and your TrueCommerce EDI Solution can be scheduled and automated with TrueCommerce Scheduler
- Fields are validated prior to sending transactions, and alerts are provided to highlight those fields with missing data, helping to optimize turnaround time on orders
- Unit pricing, duplicate purchase order numbers and items are automatically validated before processing transactions to Sage 100 ERP



ABOUT TRUECOMMERCE

TrueCommerce revolutionizes trading partner connectivity, visibility, and collaboration by linking suppliers, retail hubs and end consumers in one global commerce network. From the factory to the warehouse, from distributor to retail storefront, achieve new levels of business connectivity and performance with the world's most complete commerce network.

Connect. Integrate. Accelerate.

THE TRUECOMMERCE TEAM IS HERE TO HELP!

If you have any questions regarding TrueCommerce, or how it applies to your business, our passionate, EDI focused team is here for you.

Call us today at **888.430.4489**

www.truecommerce.com

