

Connect Shopify with your Business Software using TrueCommerce Connect

Orders and other data from your Shopify store flow directly to and from your business system—no more retyping!



BENEFITS

- Orders and customer records captured through your Shopify store are automatically sent to your business system.
- Eliminate manual bottlenecks and human error so your business can scale efficiently.
- Automatically send tracking information and order confirmations back to Shopify.
- Seamlessly exchange key business information such as orders, order updates, and inventory with your business system.
- Offered as an affordable monthly subscription service.
- One vendor, many solutions. Beyond integration, TrueCommerce offers shipping software and a product information management system (PIM) which all connect to Shopify.

Having a web store is a big responsibility, and building your customer base is probably one of your largest priorities. One of the best things you can do to achieve this is to process and ship your orders in a timely manner, giving your customers the service they expect from your brand. With your reputation on the line, it's important to have a solution in place that allows you to capture those orders and quickly integrate them with your back-end accounting package or ERP system.

Many business owners find that their staff must spend hours manually entering orders from their web store because there is no direct integration available for their business system. Then, once an order is fulfilled, someone must hurriedly type the associated tracking number back into Shopify.

With TrueCommerce Connect for Shopify, all that time-consuming manual effort can easily become a thing of the past. Now you can automatically process both your inbound orders and your outbound tracking and status information through your business system. No more manually retyping all that data!



INCREASE PROFITABILITY, IMPROVE SERVICE AND REDUCE FULFILLMENT COSTS

With TrueCommerce Connect for Shopify, your business can immediately increase profitability, improve service to end customers and reduce labor costs associated with owning an online business. The result is rapid time-to-value and exceptional ROI, along with realizing even greater value from your supply chain investments.

INCREASE AUTOMATION WITHOUT INCREASING COMPLEXITY

Now you can cost-effectively achieve the increased brand and product exposure you're looking for on your website, along with the automation you need to manage your online business. For example, with TrueCommerce Connect for Shopify, you can automatically create orders and customer records in your business system, send order confirmations, tracking details and other shipment data back to Shopify, and more.

Compared with manually retyping all that order and customer data, as well as manually keying in tracking numbers, the automation that TrueCommerce Connect delivers may seem almost like magic to you and your staff.

As your business grows, you can improve fulfillment efficiency and further reduce manual effort by integrating your business system with TrueCommerce Pack & Ship—affordable, web-based, end-to-end pack and ship automation for all the ways you ship today. Standardize and automate processes across order profiles, with custom ASNs, GS1 labels, branded packing slips, packing lists, dynamic rate shopping and more.

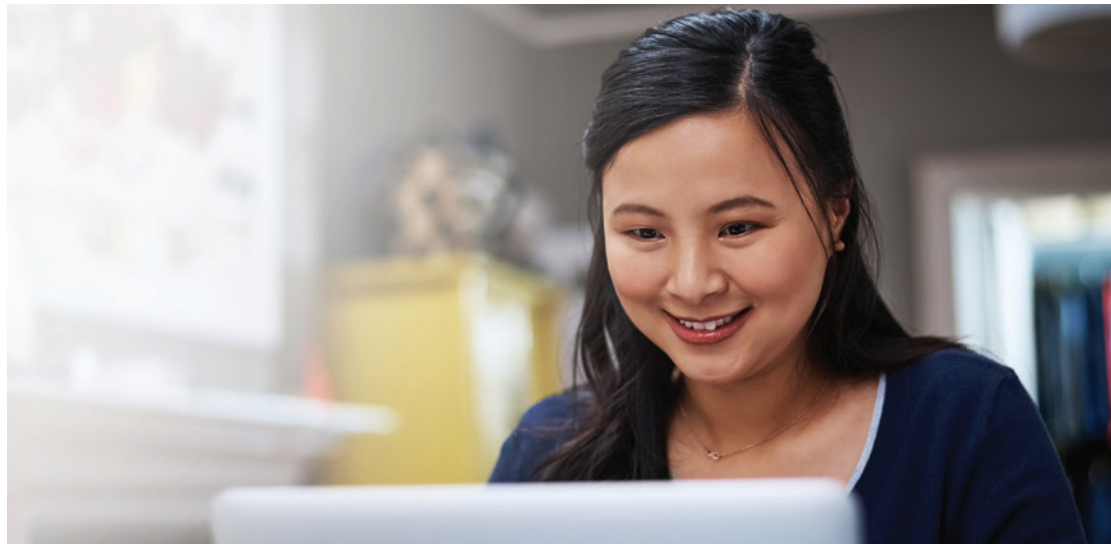
RAPID TIME-TO-VALUE AND ALL THE BENEFITS OF A WEB-BASED SERVICE

More good news: your TrueCommerce Shopify Integration can be up-and-running in just a few days, leveraging integrations you're already using. The only thing you need to provide is credential information from your

Shopify account. At last, your business can successfully maximize the growth potential that having a web store offers, with minimal added investment.

LEADING THE WAY TO A CONNECTED SUPPLY CHAIN

TrueCommerce brings connectivity to your commerce-driven world, across marketplaces like Amazon, storefronts like Shopify, your business system and your supply chain solutions. Our integrated technology platform can connect you to leading retailers, simplify EDI compliance with major customers, distributors and 3PLs, provide advanced order management, help you manage and publish product content across all your digital sales channels, and automate your order fulfillment process. Let us help you forge your connected, digital future.



ABOUT TRUECOMMERCE

TrueCommerce revolutionizes trading partner connectivity, visibility, and collaboration by linking suppliers, retail hubs and end consumers in one global commerce network. From the factory to the warehouse, from distributor to retail storefront, achieve new levels of business connectivity and performance with the world's most complete commerce network.

Connect. Integrate. Accelerate.

THE TRUECOMMERCE TEAM IS HERE TO HELP!

Would you like more information about our TrueCommerce Shopify Integration and how it can help your company streamline order fulfillment, and simplify internal processes? Our passionate, supply chain-focused team is here for you.

Call us today at 888.430.4489

www.truecommerce.com



TrueCommerce™