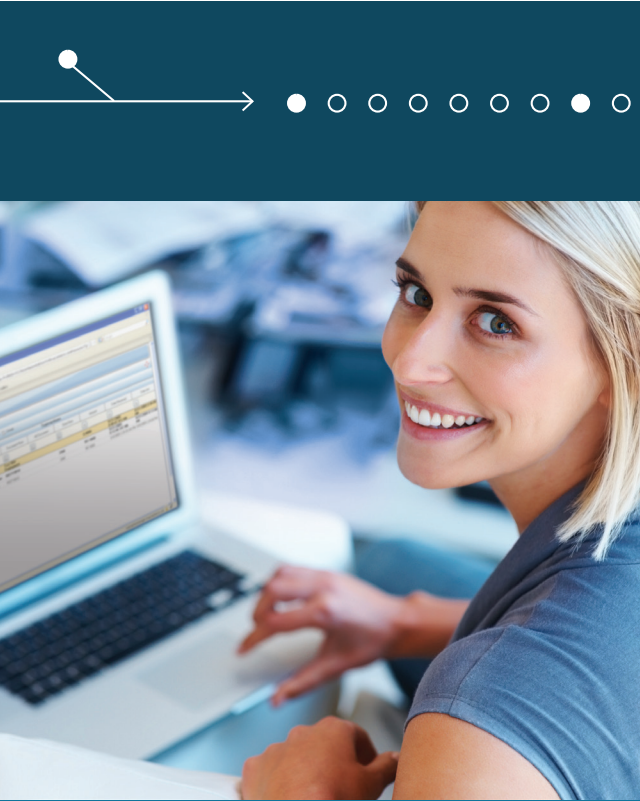


TrueCommerce EDI Solutions



Exclusively Endorsed by Sage

EDI in the Cloud for Sage 100

We Make EDI Painless!

HighJump TrueCommerce® EDI Solutions makes it painless to implement electronic data interchange (EDI), by delivering easy-to-use, robust and affordable solutions.

- ✓ TrueCommerce Transaction Manager™ is the only EDI solution exclusively endorsed and distributed by Sage.
- ✓ Complete, end-to-end EDI solution for Sage 100 from one reliable source.
- ✓ Supports more than 4,500 trading partner maps with updates at no additional charge.
- ✓ Unlimited, US-based support, free software updates, no annual contracts and no maintenance fees.



Complete Solution from One Source

Our unique modular approach enables us to offer a true end-to-end solution that is easy to use and unparalleled in scalability. We've taken the complexity out of implementing EDI by providing all four of the components you need to successfully deploy EDI:

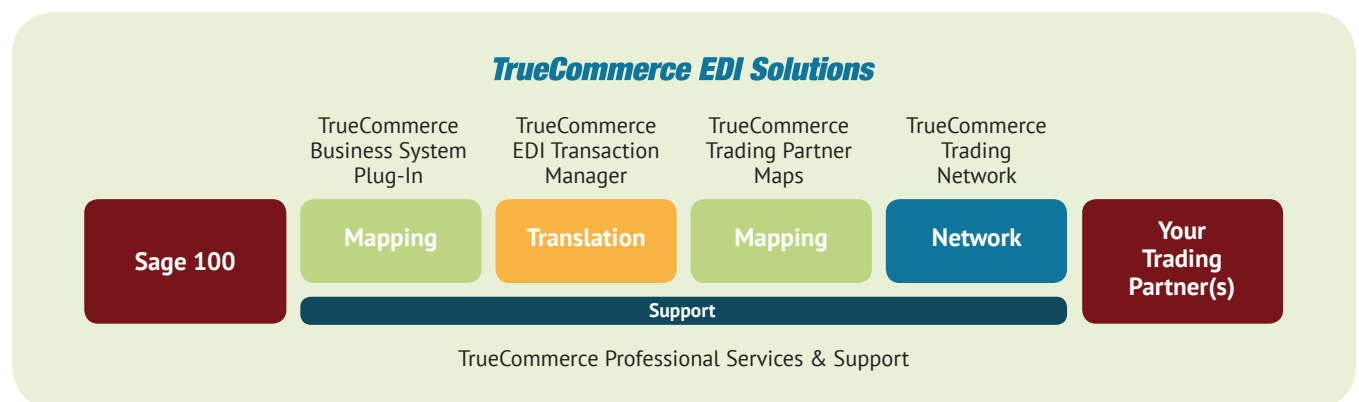
Connectivity with your trading partner(s) is required to transmit EDI documents, whether directly via the Internet or through a "Value Added Network," or VAN. The TrueCommerce Trading Network (VAN) is our Internet-based transaction gateway, across which your EDI transactions are transmitted, providing connectivity with all of your trading partners. It is compliant with virtually any connectivity protocol, including AS1/AS2/AS3, FTP and (if required) VAN interconnects.

Web-based EDI Translation Software, TrueCommerce Transaction Manager, is our user-friendly translation software that converts business documents from raw EDI data (ANSI ASC X12 and EDIFACT standard) into a human-readable business form. TrueCommerce Transaction Manager can be deployed as on-premise software or as a web-based (SaaS) deployment hosted by TrueCommerce.

Data Mapping and Integration provide the ability to seamlessly send and receive information between Transaction Manager and Sage 100 through the TrueCommerce Business System Plug-In™.

This is achieved by processing EDI transactions through a collection of intelligent software modules. These modules are programmed to format your inbound EDI transactions to match against your configurations within Sage 100 as well as match your outbound transactions against your trading partner's requirements. As your business grows and you acquire new customers, additional trading partner maps can easily be added and seamlessly integrated with your TrueCommerce solution.

Support is a critical component of a complete, end-to-end EDI solution. Our Professional Services team has the broad range of expertise to handle not only all of your trading partners' requirements, but also any technical issues related to business system integration and the sending and receiving of your EDI documents. You can also count on the support team to provide the advice and guidance you'll need to be successful. Even if you aren't familiar or comfortable with EDI, we'll be there to help you get up and running, step by step.



TrueCommerce makes EDI painless by providing businesses with complete, end-to-end solutions that are easy to use, robust and affordable – along with market-leading support and services to ensure your success.

Enhance Productivity and Reduce Costs by Integrating EDI with Sage 100

EDI is more than a way to comply with customer requirements. By integrating EDI with your system you can eliminate time-consuming, error-prone manual tasks, to accelerate key business processes and improve supply chain visibility.

Integrating your TrueCommerce EDI solution with Sage 100 reduces the need to print or re-enter transactions, which makes order processing faster and more efficient without sacrificing accuracy. TrueCommerce Transaction Manager™ offers powerful sales order, remote warehouse and purchasing integration that's proven, affordable and easy to use – enabling you to meet all of your customers' EDI requirements.

Endorsed by Sage

HighJump TrueCommerce EDI Solutions is the only EDI provider to earn the Sage endorsement. A solution that is "endorsed by Sage" has passed a rigorous evaluation, including strategic, technical and integration criteria. Endorsed solutions are certified to work with Sage's latest releases, and come from an organization that meets Sage's requirement for delivering an "exceptional customer experience."

Web-based or On-premise EDI

The choice of a web-based, integrated EDI solution hosted by TrueCommerce offers Sage 100 users the advantage of anytime/anywhere access, with no maintenance, backup or update responsibilities. You can also choose an on-premise deployment; both options deliver identical features and functionality.

Streamline Order Fulfillment

TrueCommerce Transaction Manager integrates EDI with your Sage 100 sales order module, including sales orders, invoices, shipments and advance ship notice (ASN) documents.

Leveraging Sage 100's built-in ASN support, the TrueCommerce solution supports the full range of ASN configurations, including the ability to create multiple shipments at once and to package shipments automatically based on predefined rules. You can also print GS1-128 labels (formerly UCC-128) and have existing sales orders updated automatically.

Companies that need remote warehouse integration can automate communication with third-party logistics (3PL) providers to fulfill orders faster and more accurately than ever before. For example, inbound EDI shipment documents automatically create shipments within Sage 100, including the package details. You can update lot numbers and serial numbers from inbound shipments, or create outbound ASNs from inbound shipments – all automatically.

Advanced Purchasing Integration

For businesses that want to connect with their suppliers using EDI, TrueCommerce Transaction Manager offers comprehensive

integration with the Sage 100 purchase order module, including purchase order, receipt of goods and receipt of invoice transactions.

Inbound advance ship notices (ASNs) are automatically imported into Sage 100 to receive against the original purchase order – saving you time and reducing manual effort. In addition, multiple shipments can be created against a single purchase order and EDI shipments and invoices can be assigned into batches.

"I used to spend eight hours a day entering EDI documents, but once we started using the TrueCommerce EDI Platform, it took me ten minutes and I was able to expand my support of the company into other business-critical areas, including shipping and invoicing. We were able to reassign workloads within our company to increase overall productivity."

Robin Huber, EDI Coordinator
CIPA USA, Inc.

Built-in Process Controls

TrueCommerce Transaction Manager ensures that required data, requested by your customer, has been entered correctly and will notify you of invalid fields prior to sending your transactions. The TrueCommerce solution maintains the integrity of your system by automatically validating unit pricing, duplicate purchase order numbers and items before sending transactions to Sage 100. These automated safeguards help to eliminate chargebacks from customers and reduce the turnaround time on orders by ensuring that all EDI documents sent to your customers are complete and accurate.

Automate Everyday Tasks

The TrueCommerce Scheduler™ add-on further enhances this easy-to-use, integrated EDI solution by automatically performing send and receive functions for the integrated transactions that you specify. Scheduling automated transactions at a time that best fits your business needs saves you time and reduces manual effort, so you can focus on other important business functions.

TrueCommerce EDI Solutions: A Total EDI Solution for Sage 100 from One Reliable Source

Easy to Use

- As intuitive to use as email
- Point-and-click functionality
- Requires minimal training to get started
- Includes a step-by-step user's guide
- Backed by free support!

Connects to Any Trading Partner

- Including those requiring the use of AS2 or a specific Value Added Network (VAN)
- Over 4,500 trading partner mappings and growing

Robust Functionality

- Supports any ANSI ASC X12 or EDIFACT transaction
- Transaction Manager™ can be deployed as a web-based or on-premise EDI solution
- Seamless integration across sales orders, invoices, advance ship notices, outbound sales orders and inbound shipments reduces or eliminates manual data entry
- Optional purchasing integration automates purchase order, shipment and invoicing transactions with suppliers
- Available Scheduler add-on lets you automate common tasks such as sending, receiving, importing and exporting transactions as well as backing up data

Offers Unbeatable Business Value

- Annual network savings of 30% to 50% compared to EDI solutions offering comparable functionality
- No annual subscription or maintenance fees
- No annual contract required or early termination fees
- No AS2 license fees, mailbox fees, peak hour surcharges, delimiter conversion fees or other hidden service fees
- Free software updates! If your trading partner changes a specification or adds a transaction, we'll update your data mapping at no charge
- Free unlimited US-based support

System Requirements (Applies to on-premise solution only)

- Windows 7, Vista, XP, Windows Server 2003 and 2008
 - Processor – Minimum 2 GHZ
 - RAM – Minimum 1GB
 - Minimum free hard disk space – 3GB (available)
 - Broadband internet connection*
 - IIS for Client/Server installation
 - Microsoft SQL Server Express Edition (provided by TrueCommerce) or Microsoft SQL Server 2005
- (*applies to web-based solution as well)



400 Northpointe Circle, Suite 301 | Seven Fields, PA 16046 | p: 724.940.5520 | 888.430.4489 | www.highjump.com/truecommerce

©Copyright 2015, HighJump Inc. All rights reserved. Reproduction in whole or in part without permission is prohibited, and information contained herein is subject to change without notice. TrueCommerce® is registered trademark of HighJump Inc. TrueCommerce EDI Transaction Manager™ is a trademark of HighJump Inc. Sage, the Sage logos and Sage product and service names mentioned herein are registered trademarks or trademarks of Sage, or its affiliated entities. All other trademarks are property of their respective owners.