

# TrueCommerce EDI for NetSuite ERP Purchasing Integration

TrueCommerce EDI Solutions  
Makes Purchasing Integration  
Painless for NetSuite



- ▶ A SuiteCloud Developer (SDN) partner, TrueCommerce is "Built for NetSuite" certified, and available on SuiteApp.com
- ▶ Total EDI solution for NetSuite from one trusted source, including purchasing, warehouse, and sales integration
- ▶ All-in-one solution for manufacturers, distributors and other businesses that want to streamline supply chain processes end-to-end
- ▶ More than 12,000 companies improve business productivity daily with the TrueCommerce Trading Network
- ▶ Supports more than 92,000 trading partner maps with updates at no additional charge
- ▶ Unlimited, US-based support and no annual maintenance fees

**TRUECOMMERCE TRANSACTION MANAGER™** for NetSuite ERP makes it easy and affordable to transact EDI with your suppliers, while making your business more efficient at the same time. This "Built for NetSuite" solution includes everything you need to streamline and automate purchase order processing so you can place orders faster without sacrificing accuracy. The easy-to-use interface and robust integration ensure smooth alignment with your business processes.

Comprehensive purchasing integration with NetSuite (including purchase order, item receipt and receipt of invoice transactions) makes exchanging information between NetSuite and your TrueCommerce EDI solution seamless. Purchase orders, shipments and invoices can be imported and exported automatically between Transaction Manager and NetSuite ERP, eliminating manual effort and reducing errors related to rekeying data.

TrueCommerce Transaction Manager automates many everyday tasks, like importing inbound advance ship notices (ASNs) to create item receipts against the original purchase orders, and creating bills upon importing invoices. In addition, built-in process controls ensure that key fields on your outbound EDI documents are complete before sending those transactions to suppliers—helping to minimize or eliminate errors.

The TrueCommerce Scheduler add-on further enhances this easy-to-use purchasing solution. TrueCommerce Scheduler automatically performs import and export functions for the integrated transactions that you specify. Scheduling automated transactions at a time that best fits your business needs saves you time and reduces manual effort, so you can focus on other important business processes.

## TRUECOMMERCE TRANSACTION MANAGER FEATURES AND BENEFITS FOR NETSUITE ERP

### Seamless Integration Your Business Can Rely On:

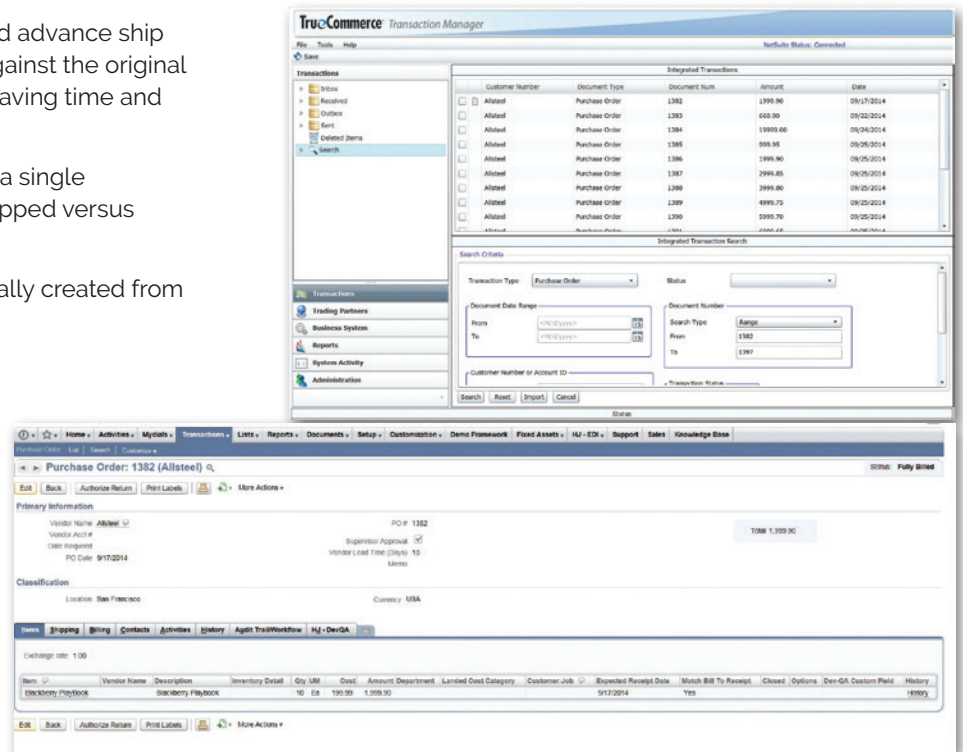
- ▶ The TrueCommerce EDI solution integrates purchase order, item receipt and bill transactions with NetSuite
- ▶ To ensure the most robust integration, the TrueCommerce EDI solution is badged "Built for NetSuite" certified and is available on SuiteApp.com
- ▶ Tight integration with your business documents eliminates the need to print or re-enter data
- ▶ You can import or export data between NetSuite ERP and the TrueCommerce EDI solution in one click—or use TrueCommerce Scheduler to set up these functions automatically, without user intervention

### Advanced Purchasing Integration Streamlines Collaboration with Vendors:

- ▶ The EDI system automatically imports inbound advance ship notices (ASNs) into NetSuite ERP to receive against the original purchase order, and creates an item receipt, saving time and reducing manual effort
- ▶ You can create multiple item receipts against a single purchase order, helping you to track items shipped versus items you are still expecting
- ▶ Outbound EDI purchase orders are automatically created from NetSuite purchase orders
- ▶ Inbound EDI invoices automatically create a bill in NetSuite, saving time and reducing errors

### Built-in Process Controls Reduce Errors and Accelerate Order Processing:

- ▶ The TrueCommerce translation software automatically ensures that all fields are valid before sending a transaction, and alerts you to invalid fields. Items shipped and invoiced are automatically validated against the original purchase order
- ▶ Vendor pricing can be validated when you create a bill, automatically comparing the EDI unit cost with the unit cost on the NetSuite purchase order. Options include an error notification if the cost is different, or assigning the NetSuite unit cost
- ▶ Purchase orders imported from Transaction Manager into NetSuite are automatically validated against supplier requirements or purchase order maps, to ensure accuracy



## ABOUT TRUECOMMERCE

TrueCommerce revolutionizes trading partner connectivity, visibility, and collaboration by linking suppliers, retail hubs and end consumers in one global commerce network. From the factory to the warehouse, from distributor to retail storefront, achieve new levels of business connectivity and performance with the world's most complete commerce network.

Connect. Integrate. Accelerate.

## THE TRUECOMMERCE TEAM IS HERE TO HELP!

If you have any questions regarding TrueCommerce, or how it applies to your business, our passionate, EDI focused team is here for you.

Call us today at 888.430.4489

[www.truecommerce.com](http://www.truecommerce.com)



**TrueCommerce™**