



DESADV Despatch Advice Message Message Implementation Guideline v.2.0

Subset of

UN/EDIFACT D.96A DESADV Message

September 28, 2020

Table of Contents

Revision log	2
Introduction	3
Segment Index.....	3
Branching Diagram	3
Segment Description	6
EDIFACT Example	26

Revision log

14.12.2018	1.0 First version
28.09.2020	2.0 EDIFACT examples added

Created by: **TrueCommerce™**

Introduction

A message specifying details for goods or services ordered under conditions agreed between the seller and the buyer.

Segment Index

Heading Section:

	<u>Pos. No.</u>	<u>Seg. ID</u>	<u>Name</u>	<u>Req. Des.</u>	<u>Max.Use</u>	<u>Group Repeat</u>	<u>Notes and Comments</u>
	0005	UNB	Interchange Header	C	1		
M	0010	UNH	Message Header	M	1		
M	0020	BGM	Beginning of Message	M	1		
	0030	DTM	Date/Time/Period	C	10		
	0070		Segment Group 1: RFF	C		10	
M	0080	RFF	Reference	M	1		
	0100		Segment Group 2: NAD	C		10	
M	0110	NAD	Name and Address	M	1		
	0230		Segment Group 6: TDT	C		10	
M	0240	TDT	Details of Transport	M	1		

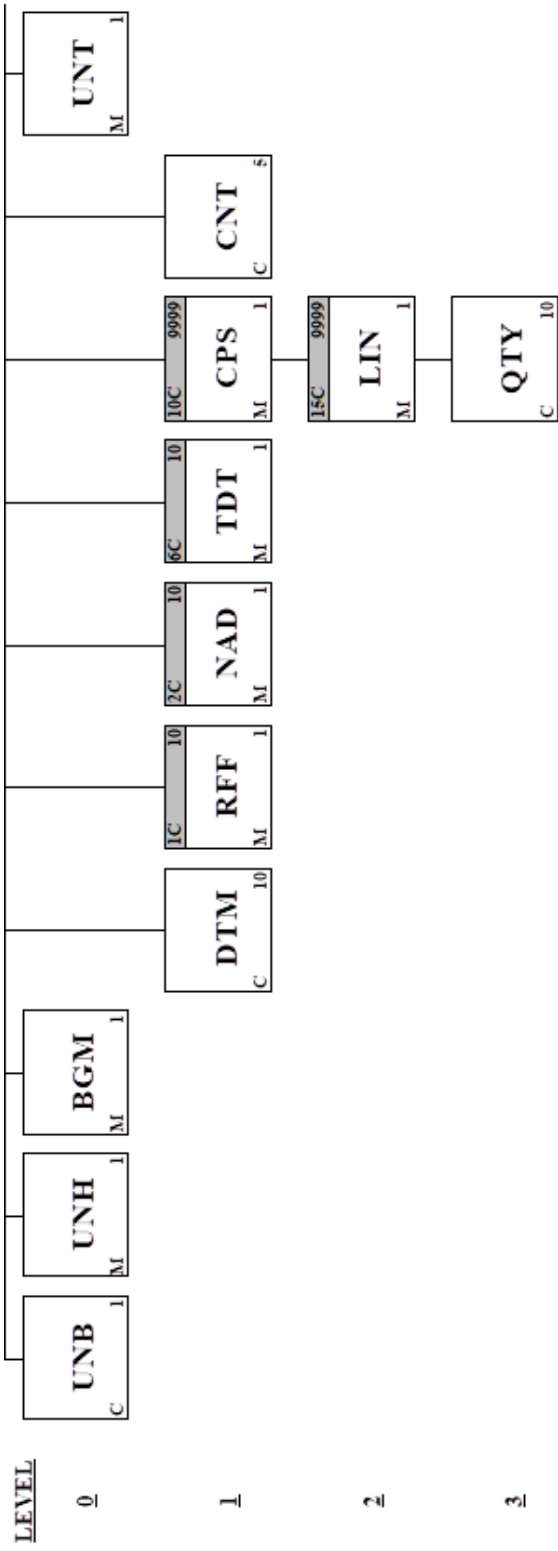
Detail Section:

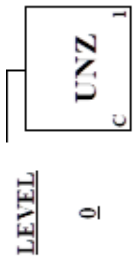
	<u>Pos. No.</u>	<u>Seg. ID</u>	<u>Name</u>	<u>Req. Des.</u>	<u>Max.Use</u>	<u>Group Repeat</u>	<u>Notes and Comments</u>
	0370		Segment Group 10: CPS-SG15	C		9999	
M	0380	CPS	Consignment Packing Sequence	M	1		
	0550		Segment Group 15: LIN-QTY	C		9999	
M	0560	LIN	Line Item	M	1		
	0600	QTY	Quantity	C	10		

Summary Section:

	<u>Pos. No.</u>	<u>Seg. ID</u>	<u>Name</u>	<u>Req. Des.</u>	<u>Max.Use</u>	<u>Group Repeat</u>	<u>Notes and Comments</u>
	0980	CNT	Control Total	C	5		
M	0990	UNT	Message Trailer	M	1		
	1000	UNZ	Interchange Trailer	C	1		

Branching Diagram





1

2

3

4

5

6

7

Segment Description

Segment: **UNB** Interchange Header

Position: 0005
Group:
Level: 0
Usage: Conditional (Optional)
Max Use: 1
Purpose: To start, identify and specify an interchange
Comments:
Notes: Example:

UNB+UNOC:3+5790000000000:14+5790000691104:14+180917:1017+56776009171017'

Data Element Summary

	<u>Data Element</u>	<u>Component Element</u>	<u>Name</u>	<u>Attributes</u>
M	S001		SYNTAX IDENTIFIER	M
			Identification of the agency controlling the syntax and indication of syntax level.	
M		0001	Syntax identifier	M a4
			Coded identification of the agency controlling a syntax and syntax level used in an interchange. UNOC UN/ECE level C	
M		0002	Syntax version number	M n1
			Version number of the syntax identified in the syntax identifier (0001). 3 Syntax version number 3	
M	S002		INTERCHANGE SENDER	M
			Identification of the sender of the interchange.	
M		0004	Sender identification	M an..35
			Name or coded representation of the sender of a data interchange.	
		0007	Partner identification code qualifier	C an..4
			Qualifier referring to the source of codes for the identifiers of interchanging partners. 14 EAN (European Article Numbering Association)	
M	S003		INTERCHANGE RECIPIENT	M
			Identification of the recipient of the interchange.	
M		0010	Recipient identification	M an..35
			Name or coded representation of the recipient of a data interchange.	
		0007	Partner identification code qualifier	C an..4
			Qualifier referring to the source of codes for the identifiers of interchanging partners. 14 EAN (European Article Numbering Association)	
M	S004		DATE AND TIME OF PREPARATION	M
			Date and time of preparation of the interchange.	
M		0017	Date of preparation	M n6
			Local date when an interchange or a functional group was prepared.	
M		0019	Time of preparation	M n4

		Local time of day when an interchange or a functional group was prepared.		
M	0020	INTERCHANGE CONTROL REFERENCE	M	an..14
		Unique reference assigned by the sender to an interchange.		
Not Used	S005	RECIPIENTS REFERENCE PASSWORD	C	
Not Used	0026	APPLICATION REFERENCE	C	an..14
Not Used	0029	PROCESSING PRIORITY CODE	C	a1
	0031	ACKNOWLEDGEMENT REQUEST	C	n1
		Code determined by the sender for acknowledgement of the interchange.		
		Refer to D.96A Data Element Dictionary for acceptable code values.		
Not Used	0032	COMMUNICATIONS AGREEMENT ID	C	an..35
	0035	TEST INDICATOR	C	n1
		Indication that the interchange is a test.		
		Refer to D.96A Data Element Dictionary for acceptable code values.		

Segment: UNH Message Header

Position: 0010

Group:

Level: 0

Usage: Mandatory

Max Use: 1

Purpose: A service segment starting and uniquely identifying a message. The message type code for the Despatch advice message is DESADV.

Comments:

Notes: Example:

UNH+567760+DESADV:D:96A:UN:EAN005'

Data Element Summary

	<u>Data Element</u>	<u>Component Element</u>	<u>Name</u>	<u>Attributes</u>
M	0062		MESSAGE REFERENCE NUMBER Unique message reference assigned by the sender.	M an..14
M	S009		MESSAGE IDENTIFIER Identification of the type, version etc. of the message being interchanged.	M
M		0065	Message type identifier Code identifying a type of message and assigned by its controlling agency. DESADV Despatch advice message	M an..6
M		0052	Message type version number Version number of a message type. D Draft directory	M an..3
M		0054	Message type release number Release number within the current message type version number (0052). 96A Version 96 A	M an..3
M		0051	Controlling agency Code identifying the agency controlling the specification, maintenance and publication of the message type. UN UN/ECE/TRADE/WP.4, United Nations Standard Messages (UNSM)	M an..2
		0057	Association assigned code Code, assigned by the association responsible for the design and maintenance of the message type concerned, which further identifies the message. EAN005	C an..6

Segment: **BGM** Beginning of Message
Position: 0020
Group:
Level: 0
Usage: Mandatory
Max Use: 1
Purpose: A segment for unique identification of the Despatch Advice document, by means of its name and its number.
Comments:
Notes: Example:
 BGM+351+7654321'

Data Element Summary

<u>Data Element</u>	<u>Component Element</u>	<u>Name</u>	<u>Attributes</u>
C002		DOCUMENT/MESSAGE NAME Identification of a type of document/message by code or name. Code preferred.	C
	1001	Document/message name, coded Document/message identifier expressed in code. 351 Despatch advice	C an..3
1004		DOCUMENT/MESSAGE NUMBER Reference number assigned to the document/message by the issuer.	C an..35

Segment: **DTM** Date/Time/Period
Position: 0030
Group:
Level: 1
Usage: Conditional (Optional)
Max Use: 10
Purpose: Date/time/period related to the whole message. The DTM segment must be specified at least once to identify the Despatch Advice date.

Comments:

Notes: Examples:

 Document date:
 DTM+137:20130507:102'

 Delivery date:
 DTM+35:20180506:102'

Data Element Summary

	<u>Data Element</u>	<u>Component Element</u>	<u>Name</u>	<u>Attributes</u>
M	C507		DATE/TIME/PERIOD Date and/or time, or period relevant to the specified date/time/period type.	M
M		2005	Date/time/period qualifier Code giving specific meaning to a date, time or period. 35 Delivery date/time, actual 137 Document/message date/time	M an..3
		2380	Date/time/period The value of a date, a date and time, a time or of a period in a specified representation.	C an..35
		2379	Date/time/period format qualifier Specification of the representation of a date, a date and time or of a period. 102 CCYYMMDD	C an..3

Group: **RFF** Segment Group 1: Reference
Position: 0070
Group:
Level: 1
Usage: Conditional (Optional)
Max Use: 10
Purpose: A group of segments giving references where necessary, their dates relating to the whole message, e.g. contract number.

Segment Summary

	Pos. No.	Seg. ID	Name	Req. Des.	Max. Use	Group: Repeat
M	0080	RFF	Reference	M	1	

Segment: **RFF** Reference
Position: 0080 (Trigger Segment)
Group: Segment Group 1 (Reference) Conditional (Optional)
Level: 1
Usage: Mandatory
Max Use: 1
Purpose: A segment for referencing documents relating to the whole despatch advice message.
Comments:
Notes: Example:
RFF+ON:4500232186'

Data Element Summary

	<u>Data Element</u>	<u>Component Element</u>	<u>Name</u>	<u>Attributes</u>
M	C506		REFERENCE Identification of a reference.	M
M		1153	Reference qualifier Code giving specific meaning to a reference segment or a reference number. DQ Delivery note number ON Order number (purchase)	M an..3
		1154	Reference number Identification number the nature and function of which can be qualified by an entry in data element 1153 Reference qualifier.	C an..35

Group: **NAD** Segment Group 2: Name and Address
Position: 0100
Group:
Level: 1
Usage: Conditional (Optional)
Max Use: 10
Purpose: A group of segments identifying names, addresses, locations, and required supporting documents relevant to the whole Despatch Advice.

Segment Summary

	Pos. No.	Seg. ID	Name	Req. Des.	Max. Use	Group: Repeat
M	0110	NAD	Name and Address	M	1	

Segment: **NAD** **Name and Address**
Position: 0110 (Trigger Segment)
Group: Segment Group 2 (Name and Address) Conditional (Optional)
Level: 1
Usage: Mandatory
Max Use: 1
Purpose: A segment for identifying names, addresses, and their functions relevant to the whole Despatch Advice. Identification of the parties involved is recommended for the Despatch Advice message, and is to be given in the NAD segment. It is recommended that where possible, only the coded form of the party ID should be specified, e.g. the buyer and seller are known to each other, thus only the coded ID is required. The delivery address may vary and would have to be clearly specified, preferably in structured format.

Comments:

Notes: Examples:

Buyer:
NAD+BY+IM99999::9'

Delivery party:
NAD+DP+++Lasse H. Schmidt+Munkegårdsvej
53:Slumkvarteret+Kvistgård++3490+DK'

Supplier:
NAD+SU+5790000000000::9'

Invoicee:
NAD+IV+5790000691104::9'

Data Element Summary

	<u>Data Element</u>	<u>Component Element</u>	<u>Name</u>	<u>Attributes</u>
M	3035		PARTY QUALIFIER Code giving specific meaning to a party. BY Buyer DP Delivery party IV Invoicee SU Supplier	M an..3
	C082		PARTY IDENTIFICATION DETAILS Identification of a transaction party by code.	C
M		3039	Party id. identification Code identifying a party involved in a transaction.	M an..35
Not Used		1131	Code list qualifier	C an..3
		3055	Code list responsible agency, coded Code identifying the agency responsible for a code list. 9 EAN (International Article Numbering association)	C an..3
Not Used	C058		NAME AND ADDRESS	C
	C080		PARTY NAME Identification of a transaction party by name, one to five lines. Party name may be formatted.	C
M		3036	Party name	M an..35

		Name of a party involved in a transaction.		
	3036	Party name	C	an..35
		Name of a party involved in a transaction.		
	3036	Party name	C	an..35
		Name of a party involved in a transaction.		
	C059	STREET	C	
		Street address and/or PO Box number in a structured address: one to three lines.		
M	3042	Street and number/p.o. box	M	an..35
		Street and number in plain language, or Post Office Box No.		
	3164	CITY NAME	C	an..35
		Name of a city (a town, a village) for addressing purposes.		
Not Used	3229	COUNTRY SUB-ENTITY IDENTIFICATION	C	an..9
	3251	POSTCODE IDENTIFICATION	C	an..9
		Code defining postal zones or addresses.		
	3207	COUNTRY, CODED	C	an..3
		Identification of the name of a country or other geographical entity as specified in ISO 3166.		

Group: **TDT** Segment Group 6: Details of Transport
Position: 0230
Group:
Level: 1
Usage: Conditional (Optional)
Max Use: 10
Purpose: A group of segments specifying details of the mode and means of transport and date/time of departure and destination relevant to the whole despatch advice.

Segment Summary

	Pos. No.	Seg. ID	Name	Req. Des.	Max. Use	Group: Repeat
M	0240	TDT	Details of Transport	M	1	

Segment: **TDT** Details of Transport
Position: 0240 (Trigger Segment)
Group: Segment Group 6 (Details of Transport) Conditional (Optional)
Level: 1
Usage: Mandatory
Max Use: 1
Purpose: A segment specifying the carriage, and the mode and means of transport of the goods being despatched.

Comments:
Notes: Example:
 TDT+20+070585+30+:::GLS'

Data Element Summary

	<u>Data Element</u>	<u>Component Element</u>	<u>Name</u>	<u>Attributes</u>
M	8051		TRANSPORT STAGE QUALIFIER Qualifier giving a specific meaning to the transport details. 20 Main-carriage transport	M an..3
	8028		CONVEYANCE REFERENCE NUMBER Unique reference given by the carrier to a certain journey or departure of a means of transport (generic term).	C an..17
Not Used	C220		MODE OF TRANSPORT	C
Not Used	C228		TRANSPORT MEANS	C
	C040		CARRIER Identification of a carrier by code and/or by name. Code preferred.	C
Not Used		3127	Carrier identification	C an..17
Not Used		1131	Code list qualifier	C an..3
Not Used		3055	Code list responsible agency, coded	C an..3
Not Used		3128	Carrier name Name of party undertaking or arranging transport of goods between named points.	C an..35

Group: **CPS** Segment Group 10: Consignment Packing Sequence
Position: 0370
Group:
Level: 1
Usage: Conditional (Optional)
Max Use: 9999
Purpose: A group of segments providing details of all package levels and of the individual despatched items contained in the consignment. This segment group provides the capability to give the hierarchical packing relationships. The group defines a logical top-down order structure. The lowest level package information of the hierarchy is followed by the detail product information.

Segment Summary

	Pos. No.	Seg. ID	Name	Req. Des.	Max. Use	Group: Repeat
M	0380	CPS	Consignment Packing Sequence	M	1	
	0550		Segment Group 15: Line Item	C		9999

Segment: **CPS** Consignment Packing Sequence
Position: 0380 (Trigger Segment)
Group: Segment Group 10 (Consignment Packing Sequence) Conditional (Optional)
Level: 1
Usage: Mandatory
Max Use: 1
Purpose: A segment identifying the sequence in which packing of the consignment occurs, e.g. boxes loaded onto a pallet.
Comments:
Notes: Example:
 CPS+1'

Data Element Summary

	<u>Data Element</u>	<u>Component Element</u>	<u>Name</u>	<u>Attributes</u>
M	7164		HIERARCHICAL ID. NUMBER	M an..12
			A unique number assigned by the sender to identify a level within a hierarchical structure.	

Group: **LIN** Segment Group 15: Line Item
Position: 0550
Group: Segment Group 10 (Consignment Packing Sequence) Conditional (Optional)
Level: 2
Usage: Conditional (Optional)
Max Use: 9999
Purpose: A group of segments providing details of the individual despatched items.

Segment Summary

	Pos. No.	Seg. ID	Name	Req. Des.	Max. Use	Group: Repeat
M	0560	LIN	Line Item	M	1	
	0600	QTY	Quantity	C	10	

Segment: **LIN** Line Item
Position: 0560 (Trigger Segment)
Group: Segment Group 15 (Line Item) Conditional (Optional)
Level: 2
Usage: Mandatory
Max Use: 1
Purpose: A segment identifying the product being despatched.
 All other segments in the detail section following the LIN segment refer to that line item.
Comments:
Notes: Example:
 LIN+1++5709262006458:EN'

Data Element Summary

	<u>Data Element</u>	<u>Component Element</u>	<u>Name</u>	<u>Attributes</u>
	1082		LINE ITEM NUMBER	C n..6
			Serial number designating each separate item within a series of articles.	
Not Used	1229		ACTION REQUEST/NOTIFICATION, CODED	C an..3
	C212		ITEM NUMBER IDENTIFICATION	C
			Goods identification for a specified source.	
		7140	Item number	C an..35
			A number allocated to a group or item.	
		7143	Item number type, coded	C an..3
			Identification of the type of item number.	
			EN International Article Numbering Association (EAN)	

Segment: **QTY** Quantity
Position: 0600
Group: Segment Group 15 (Line Item) Conditional (Optional)
Level: 3
Usage: Conditional (Optional)
Max Use: 10
Purpose: A segment to give quantity information concerning the product.
Comments:
Notes: Example:
 QTY+12:50:PCE'

Data Element Summary

	<u>Data Element</u>	<u>Component Element</u>	<u>Name</u>	<u>Attributes</u>
M	C186		QUANTITY DETAILS Quantity information in a transaction, qualified when relevant.	M
M		6063	Quantity qualifier Code giving specific meaning to a quantity. 12 Despatch quantity	M an..3
M		6060	Quantity Numeric value of a quantity.	M n..15
		6411	Measure unit qualifier Indication of the unit of measurement in which weight (mass), capacity, length, area, volume or other quantity is expressed.	C an..3

Segment: **CNT** Control Total

Position: 0980

Group:

Level: 1

Usage: Conditional (Optional)

Max Use: 5

Purpose: A segment by which control totals may be provided by sender for checking by the receiver.

Comments:

Notes: Example:

CNT:2:11'

Data Element Summary

	<u>Data Element</u>	<u>Component Element</u>	<u>Name</u>	<u>Attributes</u>
M	C270		CONTROL	M
			Control total for checking integrity of a message or part of a message.	
M		6069	Control qualifier	M an..3
			Determines the source data elements in the message which forms the basis for 6066 Control value.	
			2 Number of line items in message	
M		6066	Control value	M n..18
			Value obtained from summing the values specified by the Control Qualifier throughout the message (Hash total).	

Segment: **UNT** Message Trailer
Position: 0990
Group:
Level: 0
Usage: Mandatory
Max Use: 1
Purpose: A service segment ending a message, giving the total number of segments in the message and the control reference number of the message.
Comments:
Notes: Example:
 UNT+22+10'

Data Element Summary

	<u>Data Element</u>	<u>Component Element</u>	<u>Name</u>	<u>Attributes</u>
M	0074		NUMBER OF SEGMENTS IN A MESSAGE Control count of number of segments in a message.	M n..6
M	0062		MESSAGE REFERENCE NUMBER Unique message reference assigned by the sender.	M an..14

Segment: **UNZ** Interchange Trailer
Position: 1000
Group:
Level: 0
Usage: Conditional (Optional)
Max Use: 1
Purpose: To end and check the completeness of an interchange.
Comments:
Notes: Example:
 UNZ+1+4204'

Data Element Summary

	<u>Data Element</u>	<u>Component Element</u>	<u>Name</u>	<u>Attributes</u>
M	0036		INTERCHANGE CONTROL COUNT Count either of the number of messages or, if used, of the number of functional groups in an interchange.	M n..6
M	0020		INTERCHANGE CONTROL REFERENCE Unique reference assigned by the sender to an interchange.	M an..14

EDIFACT Example

```
UNA:+.? '  
UNB+UNOC:3+5790000000000:14+5790000691104:14+130523:1104+20091510004720 '  
UNH+20091510004720+DESADV:D:96A:UN:EAN005 '  
BGM+351+20091510004720 '  
DTM+137:20200915:102 '  
DTM+35:20200915:102 '  
RFF+ON:1846489 '  
RFF+DQ:157220000006618332 '  
NAD+BY+IM66666::9 '  
NAD+SU+5790000000000::9 '  
NAD+DP+++Viggo Andersen+Bygaden 45+Aarhus C++8000+DK '  
CPS+1 '  
LIN+1++5708722265409:EN '  
QTY+12:1:PCE '  
CNT+2:1 '  
UNT+14+20091510004720 '  
UNZ+1+20091510004720 '
```