



# **INVRPT Inventory Report Message Message Implementation Guideline v.2.0**

Subset of

UN/EDIFACT D.96A INVRPT Message

September 18, 2020

## Table of Contents

Revision log .....	2
Introduction .....	3
Segment Index.....	3
Branching Diagram .....	4
Segment Description.....	5
EDIFACT Example.....	19

## Revision log

17.12.2018	1.0 First version
18.09.2020	2.0 EDIFACT example added

Created by: **TrueCommerce™**

## Introduction

A message specifying information relating to held inventories. The Inventory report message is intended to be used in either direction between trading partners.

## Segment Index

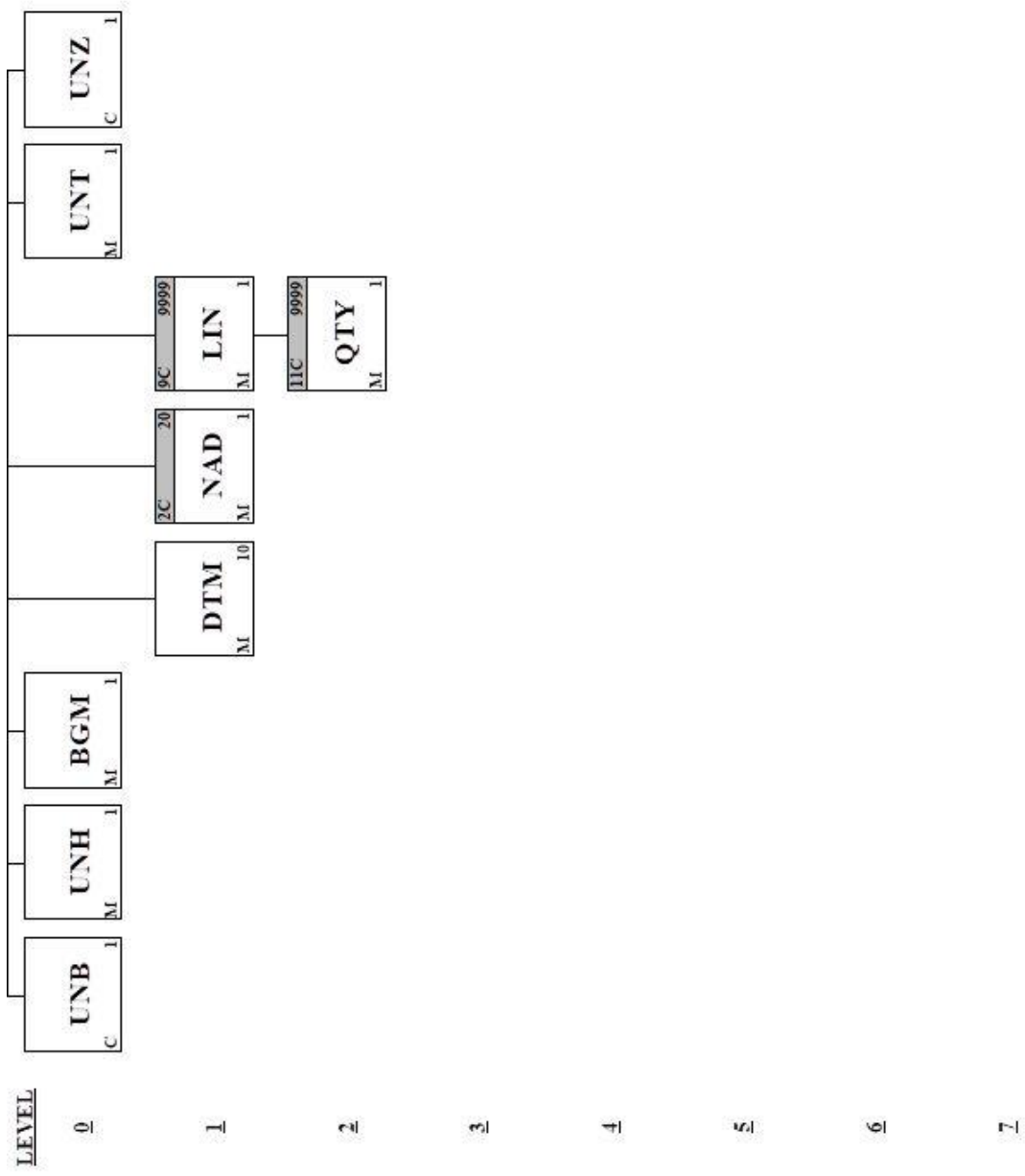
### Heading Section:

	<u>Pos. No.</u>	<u>Seg. ID</u>	<u>Name</u>	<u>Req. Des.</u>	<u>Max. Use</u>	<u>Group Repeat</u>	<u>Notes and Comments</u>
	0005	UNB	Interchange Header	C	1		
M	0010	UNH	Message Header	M	1		
M	0020	BGM	Beginning of Message	M	1		
M	0030	DTM	Date/Time/Period	M	10		
	0070		Segment Group 2: NAD	C		20	
M	0080	NAD	Name and Address	M	1		

### Detail Section:

	<u>Pos. No.</u>	<u>Seg. ID</u>	<u>Name</u>	<u>Req. Des.</u>	<u>Max. Use</u>	<u>Group Repeat</u>	<u>Notes and Comments</u>
	0280		Segment Group 9: LIN-SG11	C		9999	
M	0290	LIN	Line Item	M	1		
	0390		Segment Group 11: QTY	C		9999	
M	0400	QTY	Quantity	M	1		
M	0670	UNT	Message Trailer	M	1		
	0680	UNZ	Interchange Trailer	C	1		

# Branching Diagram



## Segment Description

**Segment:** **UNB** Interchange Header  
**Position:** 0005  
**Group:**  
**Level:** 0  
**Usage:** Conditional (Optional)  
**Max Use:** 1  
**Purpose:** To start, identify and specify an interchange  
**Comments:**  
**Notes:** Example:  
 UNB+UNOC:3+5790000000000:14+5790000691104:14+180917:1017+5677600  
 9171017'

### Data Element Summary

	<u>Data Element</u>	<u>Component Element</u>	<u>Name</u>	<u>Attributes</u>
M	S001		<b>SYNTAX IDENTIFIER</b>	M
			Identification of the agency controlling the syntax and indication of syntax level.	
M		0001	<b>Syntax identifier</b>	M a4
			Coded identification of the agency controlling a syntax and syntax level used in an interchange. Refer to D.96A Data Element Dictionary for acceptable code values.	
M		0002	<b>Syntax version number</b>	M n1
			Version number of the syntax identified in the syntax identifier (0001). Refer to D.96A Data Element Dictionary for acceptable code values.	
M	S002		<b>INTERCHANGE SENDER</b>	M
			Identification of the sender of the interchange.	
M		0004	<b>Sender identification</b>	M an..35
			Name or coded representation of the sender of a data interchange.	
		0007	<b>Partner identification code qualifier</b>	C an..4
			Qualifier referring to the source of codes for the identifiers of interchanging partners. Refer to D.96A Data Element Dictionary for acceptable code values.	
		0008	<b>Address for reverse routing</b>	C an..14
			Address specified by the sender of an interchange to be included by the recipient in the response interchanges to facilitate internal routing.	
M	S003		<b>INTERCHANGE RECIPIENT</b>	M
			Identification of the recipient of the interchange.	
M		0010	<b>Recipient identification</b>	M an..35
			Name or coded representation of the recipient of a data interchange.	
		0007	<b>Partner identification code qualifier</b>	C an..4
			Qualifier referring to the source of codes for the identifiers of interchanging partners. Refer to D.96A Data Element Dictionary for acceptable code values.	
		0014	<b>Routing address</b>	C an..14
			Address specified by the recipient of an interchange to be included by the sender and used by the recipient for routing of received interchanges inside his organization.	
M	S004		<b>DATE AND TIME OF PREPARATION</b>	M

		Date and time of preparation of the interchange.		
<b>M</b>	<b>0017</b>	<b>Date of preparation</b>	<b>M</b>	<b>n6</b>
		Local date when an interchange or a functional group was prepared.		
<b>M</b>	<b>0019</b>	<b>Time of preparation</b>	<b>M</b>	<b>n4</b>
		Local time of day when an interchange or a functional group was prepared.		
<b>M</b>	<b>0020</b>	<b>INTERCHANGE CONTROL REFERENCE</b>	<b>M</b>	<b>an..14</b>
		Unique reference assigned by the sender to an interchange.		
<b>Not Used</b>	<b>S005</b>	<b>RECIPIENTS REFERENCE PASSWORD</b>	<b>C</b>	
<b>Not Used</b>	<b>0026</b>	<b>APPLICATION REFERENCE</b>	<b>C</b>	<b>an..14</b>
<b>Not Used</b>	<b>0029</b>	<b>PROCESSING PRIORITY CODE</b>	<b>C</b>	<b>a1</b>
	<b>0031</b>	<b>ACKNOWLEDGEMENT REQUEST</b>	<b>C</b>	<b>n1</b>
		Code determined by the sender for acknowledgement of the interchange.		
		Refer to D.96A Data Element Dictionary for acceptable code values.		
<b>Not Used</b>	<b>0032</b>	<b>COMMUNICATIONS AGREEMENT ID</b>	<b>C</b>	<b>an..35</b>
	<b>0035</b>	<b>TEST INDICATOR</b>	<b>C</b>	<b>n1</b>
		Indication that the interchange is a test.		
		Refer to D.96A Data Element Dictionary for acceptable code values.		

**Segment:** **UNH** Message Header

**Position:** 0010

**Group:**

**Level:** 0

**Usage:** Mandatory

**Max Use:** 1

**Purpose:** A service segment starting and uniquely identifying a message. The message type code for the Inventory report message is INVRPT.

Note: Inventory report messages conforming to this document must contain the following data in segment UNH, composite S009:

Data element 0065 INVRPT                      0052 D                      0054 96A                      0051 UN

**Comments:**

**Notes:** Example :

UNH+567760+INVRPT:D:96A:UN'

#### Data Element Summary

	<u>Data Element</u>	<u>Component Element</u>	<u>Name</u>	<u>Attributes</u>
M	0062		<b>MESSAGE REFERENCE NUMBER</b> Unique message reference assigned by the sender.	M an..14
M	S009		<b>MESSAGE IDENTIFIER</b> Identification of the type, version etc. of the message being interchanged.	M
M		0065	<b>Message type identifier</b> Code identifying a type of message and assigned by its controlling agency. INVRPT                      Inventory report message	M an..6
M		0052	<b>Message type version number</b> Version number of a message type. Refer to D.96A Data Element Dictionary for acceptable code values.	M an..3
M		0054	<b>Message type release number</b> Release number within the current message type version number (0052). Refer to D.96A Data Element Dictionary for acceptable code values.	M an..3
M		0051	<b>Controlling agency</b> Code identifying the agency controlling the specification, maintenance and publication of the message type. UN                      UN/ECE/TRADE/WP.4, United Nations Standard Messages (UNSM)	M an..2

**Segment:** **BGM** Beginning of Message  
**Position:** 0020  
**Group:**  
**Level:** 0  
**Usage:** Mandatory  
**Max Use:** 1  
**Purpose:** A segment for unique identification of the Inventory Report document, name and its number.  
**Comments:**  
**Notes:** Example :  
 BGM+35+567760'

**Data Element Summary**

	<u>Data Element</u>	<u>Component Element</u>	<u>Name</u>	<u>Attributes</u>
>>	C002		<b>DOCUMENT/MESSAGE NAME</b> Identification of a type of document/message by code or name. Code preferred.	C
>>		1001	<b>Document/message name, coded</b> Document/message identifier expressed in code. 35 Inventory report	C an..3
Not Used		1131	<b>Code list qualifier</b>	C an..3
D		3055	<b>Code list responsible agency, coded</b> Code identifying the agency responsible for a code list. Refer to D.96A Data Element Dictionary for acceptable code values.	C an..3
		1000	<b>Document/message name</b> Plain language identifier specifying the function of a document/message.	C an..35
>>	1004		<b>DOCUMENT/MESSAGE NUMBER</b> Reference number assigned to the document/message by the issuer. Inventory Report number assigned by the document sender.	C an..35
>>	1225		<b>MESSAGE FUNCTION, CODED</b> Code indicating the function of the message. 9 Original	C an..3



**Segment:** **DTM** Date/Time/Period  
**Position:** 0030  
**Group:**  
**Level:** 1  
**Usage:** Mandatory  
**Max Use:** 10  
**Purpose:** Date/time/period related to the whole message. The segment must be specified at least once to identify the date at which the inventory report was issued.

**Comments:**

**Notes:** Examples:  
  
 Document date:  
 DTM+137:20180917:102'  
  
 Inventory report date:  
 DTM+366:20180917:102'

**Data Element Summary**

	<u>Data Element</u>	<u>Component Element</u>	<u>Name</u>	<u>Attributes</u>
M	C507		DATE/TIME/PERIOD	M
			Date and/or time, or period relevant to the specified date/time/period type.	
M		2005	Date/time/period qualifier	M an..3
			Code giving specific meaning to a date, time or period.	
			Identification of the 'Document/message date/time' (code value 137) is mandatory in the inventory report.	
			Refer to D.96A Data Element Dictionary for acceptable code values.	
>>		2380	Date/time/period	C an..35
			The value of a date, a date and time, a time or of a period in a specified representation.	
>>		2379	Date/time/period format qualifier	C an..3
			Specification of the representation of a date, a date and time or of a period.	
			201 YYMMDDHHMM	

**Group:** **NAD** Segment Group 2: Name and Address  
**Position:** 0070  
**Group:**  
**Level:** 1  
**Usage:** Conditional (Optional)  
**Max Use:** 20  
**Purpose:** A group of segments identifying names, addresses and locations relevant to the whole message.

**Segment Summary**

	<b>Pos. No.</b>	<b>Seg. ID</b>	<b>Name</b>	<b>Req. Des.</b>	<b>Max. Use</b>	<b>Group: Repeat</b>
M	0080	NAD	Name and Address	M	1	

**Segment:** **NAD** **Name and Address**  
**Position:** 0080 (Trigger Segment)  
**Group:** Segment Group 2 (Name and Address)      Conditional (Optional)  
**Level:** 1  
**Usage:** Mandatory  
**Max Use:** 1  
**Purpose:** A segment for identifying names and addresses and their functions relevant for the whole Inventory Report. Indications of the parties involved is recommended for the Inventory Report message. They are to be given in the NAD segment. It is recommended that where possible only the coded form of the party ID should be specified.

**Comments:**

**Notes:** Example:  
  
Supplier:  
NAD+SU+5790000000000::9'

**Data Element Summary**

	<u>Data Element</u>	<u>Component Element</u>	<u>Name</u>	<u>Attributes</u>
M	3035		<b>PARTY QUALIFIER</b> Code giving specific meaning to a party. SU                      Supplier	M an..3
R	C082		<b>PARTY IDENTIFICATION DETAILS</b> Identification of a transaction party by code.	C
M		3039	<b>Party id. identification</b> Code identifying a party involved in a transaction. EAN Location Code - Format n13	M an..35
Not Used		1131	<b>Code list qualifier</b>	C an..3
>>		3055	<b>Code list responsible agency, coded</b> Code identifying the agency responsible for a code list. 9                      EAN (International Article Numbering association)	C an..3
Not Used	C058		<b>NAME AND ADDRESS</b>	C
D	C080		<b>PARTY NAME</b> Identification of a transaction party by name, one to five lines. Party name may be formatted.	C
M		3036	<b>Party name</b> Name of a party involved in a transaction. Party Name in clear text.	M an..35
		3036	<b>Party name</b> Name of a party involved in a transaction.	C an..35
		3036	<b>Party name</b> Name of a party involved in a transaction.	C an..35
		3036	<b>Party name</b> Name of a party involved in a transaction.	C an..35
		3036	<b>Party name</b> Name of a party involved in a transaction.	C an..35
		3045	<b>Party name format, coded</b> Specification of the representation of a party name.	C an..3

		Refer to D.96A Data Element Dictionary for acceptable code values.	
	<b>C059</b>	<b>STREET</b>	<b>C</b>
		Street address and/or PO Box number in a structured address: one to three lines.	
<b>M</b>	<b>3042</b>	<b>Street and number/p.o. box</b>	<b>M an..35</b>
		Street and number in plain language, or Post Office Box No. Building Name/Number and Street	
	<b>3042</b>	<b>Street and number/p.o. box</b>	<b>C an..35</b>
		Street and number in plain language, or Post Office Box No. Name and/or P.O. Box	
	<b>3042</b>	<b>Street and number/p.o. box</b>	<b>C an..35</b>
		Street and number in plain language, or Post Office Box No.	
	<b>3042</b>	<b>Street and number/p.o. box</b>	<b>C an..35</b>
		Street and number in plain language, or Post Office Box No.	
<b>D</b>	<b>3164</b>	<b>CITY NAME</b>	<b>C an..35</b>
		Name of a city (a town, a village) for addressing purposes. City/Town, clear text.	
<b>D</b>	<b>3229</b>	<b>COUNTRY SUB-ENTITY IDENTIFICATION</b>	<b>C an..9</b>
		Identification of the name of sub-entities (state, province) defined by appropriate governmental agencies. County/State in clear text.	
<b>D</b>	<b>3251</b>	<b>POSTCODE IDENTIFICATION</b>	<b>C an..9</b>
		Code defining postal zones or addresses. Postal Code	
<b>D</b>	<b>3207</b>	<b>COUNTRY, CODED</b>	<b>C an..3</b>
		Identification of the name of a country or other geographical entity as specified in ISO 3166. ISO 3166 two alpha code. Refer to D.96A Data Element Dictionary for acceptable code values.	

**Group:** **LIN** Segment Group 9: Line Item  
**Position:** 0280  
**Group:**  
**Level:** 1  
**Usage:** Conditional (Optional)  
**Max Use:** 9999  
**Purpose:** A group of segments providing detailed information on each line of the inventory report.

**Segment Summary**

	<b>Pos. No.</b>	<b>Seg. ID</b>	<b>Name</b>	<b>Req. Des.</b>	<b>Max. Use</b>	<b>Group: Repeat</b>
M	0290	LIN	Line Item	M	1	
	0390		Segment Group 11: Quantity	C		9999

**Segment:** **LIN** Line Item  
**Position:** 0290 (Trigger Segment)  
**Group:** Segment Group 9 (Line Item)      Conditional (Optional)  
**Level:** 1  
**Usage:** Mandatory  
**Max Use:** 1  
**Purpose:** A segment identifying a specific line item in the inventory report. All other segments in the detail section refer to the line item.  
**Comments:**  
**Notes:** Example :  
  
LIN+1++5709262006458:EN'

**Data Element Summary**

	<u>Data Element</u>	<u>Component Element</u>	<u>Name</u>	<u>Attributes</u>
	1082		<b>LINE ITEM NUMBER</b>	<b>C n..6</b>
			Serial number designating each separate item within a series of articles.	
			Application generated number of the count of the item lines within the Inventory Report.	
<b>Not Used</b>	1229		<b>ACTION REQUEST/NOTIFICATION, CODED</b>	<b>C an..3</b>
>>	C212		<b>ITEM NUMBER IDENTIFICATION</b>	<b>C</b>
			Goods identification for a specified source.	
>>		7140	<b>Item number</b>	<b>C an..35</b>
			A number allocated to a group or item.	
			Format n..14	
			EAN-8, UPC-A, EAN-13, or DUN-14 - this is the number of the article being reported.	
>>		7143	<b>Item number type, coded</b>	<b>C an..3</b>
			Identification of the type of item number.	
			EN                      International Article Numbering Association (EAN)	

**Group:** **QTY** Segment Group 11: Quantity  
**Position:** 0390  
**Group:** Segment Group 9 (Line Item) Conditional (Optional)  
**Level:** 2  
**Usage:** Conditional (Optional)  
**Max Use:** 9999  
**Purpose:** A group of segments providing quantity, and optionally package details, line item currencies and references.

**Segment Summary**

	<u>Pos. No.</u>	<u>Seg. ID</u>	<u>Name</u>	<u>Req. Des.</u>	<u>Max. Use</u>	<u>Group: Repeat</u>
M	0400	QTY	Quantity	M	1	

**Segment:** **QTY** Quantity

**Position:** 0400 (Trigger Segment)

**Group:** Segment Group 11 (Quantity) Conditional (Optional)

**Level:** 2

**Usage:** Mandatory

**Max Use:** 1

**Purpose:** A segment to provide quantity information, suitably qualified for the product referred to by the LIN segment.

**Comments:**

**Notes:** Example :

Actual stock:  
QTY+145:4:PCE'

#### Data Element Summary

	<u>Data Element</u>	<u>Component Element</u>	<u>Name</u>	<u>Attributes</u>
M	C186		<b>QUANTITY DETAILS</b> Quantity information in a transaction, qualified when relevant.	<b>M</b>
M		6063	<b>Quantity qualifier</b> Code giving specific meaning to a quantity. 145 Actual stock	<b>M an..3</b>
M		6060	<b>Quantity</b> Numeric value of a quantity.	<b>M n..15</b>
D		6411	<b>Measure unit qualifier</b> Indication of the unit of measurement in which weight (mass), capacity, length, area, volume or other quantity is expressed. KGM = Kilogram PCE Piece	<b>C an..3</b>



**Segment:** **UNT** Message Trailer

**Position:** 0670

**Group:**

**Level:** 0

**Usage:** Mandatory

**Max Use:** 1

**Purpose:** A service segment ending a message, giving the total number of segments in the message and the control reference number of the message.

**Comments:**

**Notes:** Example :

UNT+24+567760'

#### Data Element Summary

	<u>Data Element</u>	<u>Component Element</u>	<u>Name</u>	<u>Attributes</u>
M	0074		<b>NUMBER OF SEGMENTS IN A MESSAGE</b> Control count of number of segments in a message. The total number of segments in the message is detailed here.	M n..6
M	0062		<b>MESSAGE REFERENCE NUMBER</b> Unique message reference assigned by the sender. The message reference number detailed here should equal the one specified in the UNH segment.	M an..14

**Segment:** **UNZ** Interchange Trailer  
**Position:** 0680  
**Group:**  
**Level:** 0  
**Usage:** Conditional (Optional)  
**Max Use:** 1  
**Purpose:** To end and check the completeness of an interchange.  
**Comments:**  
**Notes:** Example:  
 UNZ+1+56776009171017'

**Data Element Summary**

	<u>Data Element</u>	<u>Component Element</u>	<u>Name</u>	<u>Attributes</u>
M	0036		<b>INTERCHANGE CONTROL COUNT</b> Count either of the number of messages or, if used, of the number of functional groups in an interchange.	<b>M n..6</b>
M	0020		<b>INTERCHANGE CONTROL REFERENCE</b> Unique reference assigned by the sender to an interchange.	<b>M an..14</b>

## EDIFACT Example

```
UNA:+.? '
UNB+UNOC:3+5790000000000:14+5790000691104:14+200917:1017+5677 '
UNH+567760+INVRPT:D:96A:UN '
BGM+35+567760 '
DTM+137:20200917:102 '
DTM+366:20200917:102 '
NAD+SU+5790000000000:::9 '
LIN+1++5709262006458:EN '
QTY+145:4:PCE '
LIN+2++5709262956923:EN '
QTY+145:2:PCE '
LIN+3++5709262960760:EN '
QTY+145:8:PCE '
LIN+4++5709262968056:EN '
QTY+145:4:PCE '
LIN+5++5709263969685:EN '
QTY+145:4:PCE '
LIN+6++5709272979691:EN '
QTY+145:4:PCE '
UNT+24+567760 '
UNZ+1+5677 '
```