



ORDERS Purchase Order Message Message Implementation Guideline v.2.0

Subset of

UN/EDIFACT D.96A ORDERS Message

September 18, 2020

Table of Contents

Revision log	2
Introduction	3
Segment Index.....	3
Branching Diagram	4
Segment Description.....	6
EDIFACT Examples.....	31

Revision log

14.12.2018	1.0 First version
18.09.2020	2.0 EDIFACT examples added

Created by: **TrueCommerce™**

Introduction

A message specifying details for goods or services ordered under conditions agreed between the seller and the buyer.

Segment Index

Heading Section:

	<u>Pos. No.</u>	<u>Seg. ID</u>	<u>Name</u>	<u>Req. Des.</u>	<u>Max.Use</u>	<u>Group Repeat</u>	<u>Notes and Comments</u>
	0005	UNB	Interchange Header	C	1		
M	0010	UNH	Message Header	M	1		
M	0020	BGM	Beginning of Message	M	1		
M	0030	DTM	Date/Time/Period	M	35		
	0070	FTX	Free Text	C	99		
	0080		Segment Group 1: RFF	C		10	
M	0090	RFF	Reference	M	1		
	0110		Segment Group 2: NAD-SG5	C		99	
M	0120	NAD	Name and Address	M	1		
	0210		Segment Group 5: CTA-COM	C		5	
M	0220	CTA	Contact Information	M	1		
	0230	COM	Communication Contact	C	5		

Detail Section:

	<u>Pos. No.</u>	<u>Seg. ID</u>	<u>Name</u>	<u>Req. Des.</u>	<u>Max.Use</u>	<u>Group Repeat</u>	<u>Notes and Comments</u>
	0930		Segment Group 25: LIN-PIA-QTY-MOA-SG28	C		200000	
M	0940	LIN	Line Item	M	1		
	0950	PIA	Additional Product Id	C	25		
	0980	QTY	Quantity	C	10		
	1020	MOA	Monetary Amount	C	10		
	1180		Segment Group 28: PRI	C		25	
M	1190	PRI	Price Details	M	1		

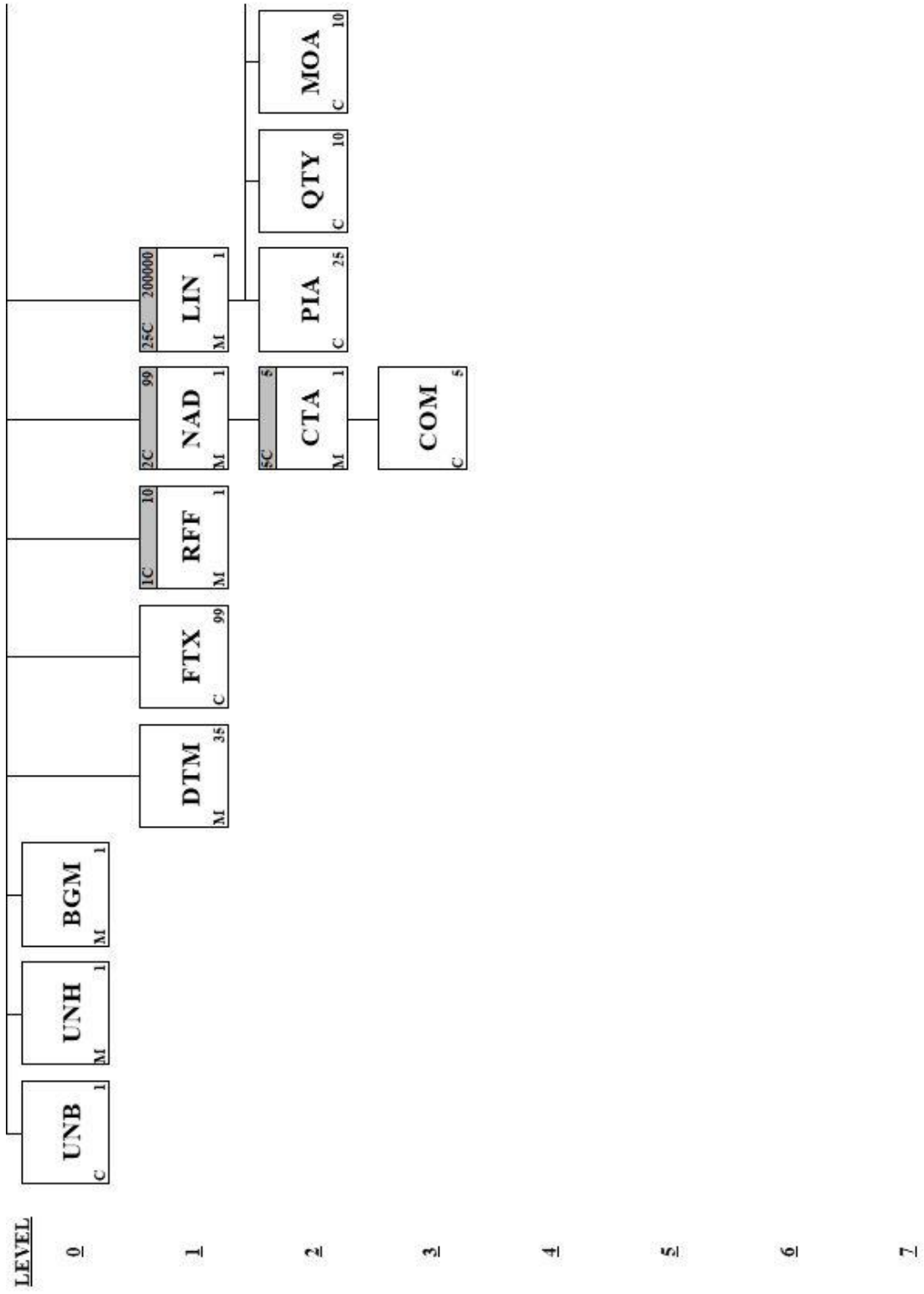
Section Control:

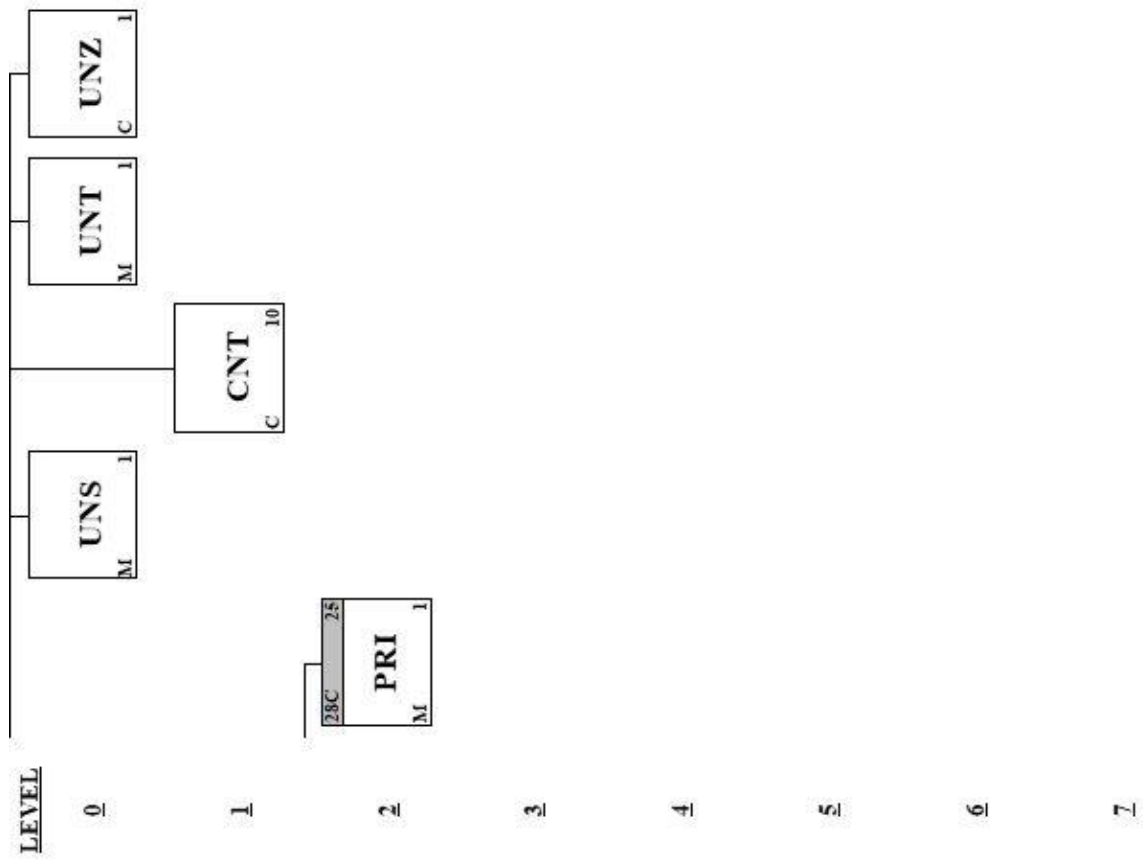
	<u>Pos. No.</u>	<u>Seg. ID</u>	<u>Name</u>	<u>Req. Des.</u>	<u>Max.Use</u>	<u>Group Repeat</u>	<u>Notes and Comments</u>
M	2090	UNS	Section Control	M	1		

Summary Section:

	<u>Pos. No.</u>	<u>Seg. ID</u>	<u>Name</u>	<u>Req. Des.</u>	<u>Max.Use</u>	<u>Group Repeat</u>	<u>Notes and Comments</u>
	2110	CNT	Control Total	C	10		
M	2160	UNT	Message Trailer	M	1		

Branching Diagram





Segment Description

Segment: **UNB** Interchange Header

Position: 0005

Group:

Level: 0

Usage: Conditional (Optional)

Max Use: 1

Purpose: To start, identify and specify an interchange

Comments:

Notes: Example:
UNB+UNOC:3+5790000691104:14+5790000000000:14+181026:1425+1436103
++++1'

Data Element Summary

	<u>Data Element</u>	<u>Component Element</u>	<u>Name</u>	<u>Attributes</u>
M	S001		SYNTAX IDENTIFIER	M
			Identification of the agency controlling the syntax and indication of syntax level.	
M		0001	Syntax identifier	M a4
			Coded identification of the agency controlling a syntax and syntax level used in an interchange. Refer to D.96A Data Element Dictionary for acceptable code values.	
M		0002	Syntax version number	M n1
			Version number of the syntax identified in the syntax identifier (0001).	
M	S002		INTERCHANGE SENDER	M
			Identification of the sender of the interchange.	
M		0004	Sender identification	M an..35
			Name or coded representation of the sender of a data interchange.	
		0007	Partner identification code qualifier	C an..4
			Qualifier referring to the source of codes for the identifiers of interchanging partners. Refer to D.96A Data Element Dictionary for acceptable code values.	
		0008	Address for reverse routing	C an..14
			Address specified by the sender of an interchange to be included by the recipient in the response interchanges to facilitate internal routing.	
M	S003		INTERCHANGE RECIPIENT	M
			Identification of the recipient of the interchange.	
M		0010	Recipient identification	M an..35
			Name or coded representation of the recipient of a data interchange.	
		0007	Partner identification code qualifier	C an..4
			Qualifier referring to the source of codes for the identifiers of interchanging partners. Refer to D.96A Data Element Dictionary for acceptable code values.	
		0014	Routing address	C an..14
			Address specified by the recipient of an interchange to be included by the sender and used by the recipient for routing of received interchanges inside his organization.	
M	S004		DATE AND TIME OF PREPARATION	M
			Date and time of preparation of the interchange.	
M		0017	Date of preparation	M n6

M	0019	Local date when an interchange or a functional group was prepared. Time of preparation	M n4
M	0020	Local time of day when an interchange or a functional group was prepared. INTERCHANGE CONTROL REFERENCE	M an..14
Not Used	S005	Unique reference assigned by the sender to an interchange. RECIPIENTS REFERENCE PASSWORD	C
Not Used	0026	APPLICATION REFERENCE	C an..14
Not Used	0029	PROCESSING PRIORITY CODE	C a1
	0031	ACKNOWLEDGEMENT REQUEST	C n1
		Code determined by the sender for acknowledgement of the interchange. Refer to D.96A Data Element Dictionary for acceptable code values.	
Not Used	0032	COMMUNICATIONS AGREEMENT ID	C an..35
	0035	TEST INDICATOR	C n1
		Indication that the interchange is a test. Refer to D.96A Data Element Dictionary for acceptable code values.	

Segment: **UNH** Message Header

Position: 0010

Group:

Level: 0

Usage: Mandatory

Max Use: 1

Purpose: A service segment starting and uniquely identifying a message. The message type code for the Purchase order message is ORDERS.

Comments:

Notes: Example:
UNH+0001+ORDERS:D:96A:UN:EAN008'

Data Element Summary

	<u>Data Element</u>	<u>Component Element</u>	<u>Name</u>	<u>Attributes</u>
M	0062		MESSAGE REFERENCE NUMBER Unique message reference assigned by the sender.	M an..14
M	S009		MESSAGE IDENTIFIER Identification of the type, version etc. of the message being interchanged.	M
M		0065	Message type identifier Code identifying a type of message and assigned by its controlling agency. ORDERS Purchase order message	M an..6
M		0052	Message type version number Version number of a message type. D Draft	M an..3
M		0054	Message type release number Release number within the current message type version number (0052). 96A Release 1996 - A	M an..3
M		0051	Controlling agency Code identifying the agency controlling the specification, maintenance and publication of the message type. UN UN/ECE/TRADE/WP.4, United Nations Standard Messages (UNSM)	M an..2
M		0057	Association assigned code Code, assigned by the association responsible for the design and maintenance of the message type concerned, which further identifies the message. EAN008 EAN version control number (EAN Code)	C an..6

Segment: **BGM** Beginning of Message
Position: 0020
Group:
Level: 0
Usage: Mandatory
Max Use: 1
Purpose: A segment by which the sender must uniquely identify the order by means of its name and number and when necessary its function.

Comments:

Notes: Imerco issues two different order types:

 220: Standard purchase order
 640: Delivery purchase order (Drop Ship Order)

 Example:
 BGM+220+1436103'

Data Element Summary

<u>Data Element</u>	<u>Component Element</u>	<u>Name</u>	<u>Attributes</u>
C002		DOCUMENT/MESSAGE NAME	C
		Identification of a type of document/message by a code	
	1001	Document/message name, coded	C an..3
		Document/message identifier expressed in code.	
		220 Order	
		640 Delivery order	
1004		DOCUMENT/MESSAGE NUMBER	C an..35
		Reference number assigned to the document/message by the issuer.	

Segment: **DTM** Date/Time/Period
Position: 0030
Group:
Level: 1
Usage: Mandatory
Max Use: 35
Purpose: A segment specifying general dates related to the whole message.
Comments:
Notes: Examples:

Requested delivery date:
 DTM+2:20180608:102'

Document date:
 DTM+137:20180601:102'

Data Element Summary

	<u>Data Element</u>	<u>Component Element</u>	<u>Name</u>	<u>Attributes</u>
M	C507		DATE/TIME/PERIOD Date and/or time, or period relevant to the specified date/time/period type.	M
M		2005	Date/time/period qualifier Code giving specific meaning to a date, time or period. 2 Delivery date/time, requested 137 Document/message date/time	M an..3
		2380	Date/time/period The value of a date, a date and time, a time or of a period in a specified representation.	C an..35
		2379	Date/time/period format qualifier Specification of the representation of a date, a date and time or of a period. 102 CCYYMMDD	C an..3

Segment: **FTX** Free Text

Position: 0070

Group:

Level: 1

Usage: Conditional (Optional)

Max Use: 99

Purpose: A segment with free text information, in clear form, used when additional information is needed but cannot be accommodated within other segments.

Comments:

Notes: Example:
FTX+DEL+++Må gerne stilles i carporten'

Data Element Summary

	<u>Data Element</u>	<u>Component Element</u>	<u>Name</u>	<u>Attributes</u>
M	4451		TEXT SUBJECT QUALIFIER Code specifying subject of a free text. DEL Delivery information	M an..3
	4453		TEXT FUNCTION, CODED Code specifying how to handle the text. 1 Text for subsequent use	C an..3
Not Used	C107		TEXT REFERENCE	C
	C108		TEXT LITERAL Free text; one to five lines.	C
M		4440	Free text Free text field available to the message sender for information.	M an..70
		4440	Free text Free text field available to the message sender for information.	C an..70
		4440	Free text Free text field available to the message sender for information.	C an..70
		4440	Free text Free text field available to the message sender for information.	C an..70
		4440	Free text Free text field available to the message sender for information.	C an..70
		4440	Free text Free text field available to the message sender for information.	C an..70

Group: **RFF** Segment Group 1: Reference
Position: 0080
Group:
Level: 1
Usage: Conditional (Optional)
Max Use: 10
Purpose: A group of segments for giving references and where necessary, their dates, relating to the whole message e.g. contract number, import/export license number, reservation number.

Segment Summary

	<u>Pos. No.</u>	<u>Seg. ID</u>	<u>Name</u>	<u>Req. Des.</u>	<u>Max. Use</u>	<u>Group: Repeat</u>
M	0090	RFF	Reference	M	1	

Segment: **RFF** Reference
Position: 0090 (Trigger Segment)
Group: Segment Group 1 (Reference) Conditional (Optional)
Level: 1
Usage: Mandatory
Max Use: 1
Purpose: A segment identifying the reference by its number and where appropriate a line number within a document.

Comments:

Notes: Examples:

Campaign reference:
RFF+PD:2006189'

Ultimate customer:
RFF+UC:IM99999'

Data Element Summary

	<u>Data Element</u>	<u>Component Element</u>	<u>Name</u>	<u>Attributes</u>
M	C506		REFERENCE	M
			Identification of a reference.	
M		1153	Reference qualifier	M an..3
			Code giving specific meaning to a reference segment or a reference number.	
			PD Promotion deal number	
			UC Ultimate customer's reference number	
		1154	Reference number	C an..35
			Identification number the nature and function of which can be qualified by an entry in data element 1153 Reference qualifier.	

Group: **NAD** Segment Group 2: Name and Address
Position: 0110
Group:
Level: 1
Usage: Conditional (Optional)
Max Use: 99
Purpose: A group of segments identifying the parties with associated information.

Segment Summary

	Pos. No.	Seg. ID	Name	Req. Des.	Max. Use	Group: Repeat
M	0120	NAD	Name and Address	M	1	
	0210		Segment Group 5: Contact Information	C		5

Segment: **NAD** **Name and Address**
Position: 0120 (Trigger Segment)
Group: Segment Group 2 (Name and Address) Conditional (Optional)
Level: 1
Usage: Mandatory
Max Use: 1
Purpose: A segment identifying names and addresses of the parties, in coded or clear form, and their functions relevant to the order. Identification of the seller and buyer parties is mandatory for the order message. It is recommended that where possible only the coded form of the party ID should be specified e.g. The Buyer and Seller are known to each other, thus only the coded ID is required, but the Delivery address may vary and would have to be clearly specified, in structured format.

Comments:

Notes: Examples:

Buyer:
NAD+BY+IM99999::9'

Supplier:
NAD+SU+5790000000000::9'

Invoicee:
NAD+IV+5790000691104::9'

Delivery Party (DropShip):
NAD+DP+++Lasse H. Schmidt+Munkegårdsvej
53:Slumkvarteret+Kvistgård++3490+DK

Data Element Summary

	<u>Data Element</u>	<u>Component Element</u>	<u>Name</u>	<u>Attributes</u>
M	3035		PARTY QUALIFIER Code giving specific meaning to a party. BY Buyer DP Delivery party IV Invoicee SU Supplier	M an..3
	C082		PARTY IDENTIFICATION DETAILS Identification of a transaction party by code.	C
M		3039	Party id. identification Code identifying a party involved in a transaction.	M an..35
Not Used		1131	Code list qualifier	C an..3
		3055	Code list responsible agency, coded Code identifying the agency responsible for a code list. 9 EAN (International Article Numbering association)	C an..3
Not Used	C058		NAME AND ADDRESS	C
	C080		PARTY NAME Identification of a transaction party by name, one to five lines. Party name may be formatted.	C
M		3036	Party name Name of a party involved in a transaction.	M an..35
	C059		STREET	C

M	3042	Street address and/or PO Box number in a structured address: one to three lines. Street and number/p.o. box	M	an..35
	3164	Street and number in plain language, or Post Office Box No. CITY NAME	C	an..35
Not Used	3229	Name of a city (a town, a village) for addressing purposes. COUNTRY SUB-ENTITY IDENTIFICATION	C	an..9
	3251	POSTCODE IDENTIFICATION	C	an..9
	3207	Code defining postal zones or addresses. COUNTRY, CODED	C	an..3
		Identification of the name of a country or other geographical entity as specified in ISO 3166.		

Group: **CTA** Segment Group 5: Contact Information
Position: 0210
Group: Segment Group 2 (Name and Address) Conditional (Optional)
Level: 2
Usage: Conditional (Optional)
Max Use: 5
Purpose: A group of segments giving contact details of the specific person or department within the party identified in the NAD segment.

Segment Summary

	Pos. No.	Seg. ID	Name	Req. Des.	Max. Use	Group: Repeat
M	0220	CTA	Contact Information	M	1	
	0230	COM	Communication Contact	C	5	

Segment: **CTA Contact Information**
Position: 0220 (Trigger Segment)
Group: Segment Group 5 (Contact Information) Conditional (Optional)
Level: 2
Usage: Mandatory
Max Use: 1
Purpose: A segment to identify a person or department, and their function, to whom communications should be directed.

Comments:

Notes: Example:

Place of delivery contact:
 CTA+LB+:Lasse H. Schmidt'

Data Element Summary

<u>Data Element</u>	<u>Component Element</u>	<u>Name</u>	<u>Attributes</u>
Not Used	3139	CONTACT FUNCTION, CODED Code specifying the function of a contact (e.g. department or person). LB Place of delivery contact	C an..3
	C056	DEPARTMENT OR EMPLOYEE DETAILS Code and/or name of a department or employee.	C
	3413	Department or employee identification	C an..17
	3412	Department or employee The department or person within an organizational entity.	C an..35

Segment: **COM** **Communication Contact**
Position: 0230
Group: Segment Group 5 (Contact Information) Conditional (Optional)
Level: 3
Usage: Conditional (Optional)
Max Use: 5
Purpose: A segment to identify a communications type and number for the contact specified in the CTA segment.

Comments:

Notes: Examples:

 Phone number:
 COM+47598763:TE'

 Email:
 COM+Lasse.Schmidt@truecommerce.com:EM'

Data Element Summary

	<u>Data Element</u>	<u>Component Element</u>	<u>Name</u>	<u>Attributes</u>
M	C076		COMMUNICATION CONTACT Communication number of a department or employee in a specified channel.	M
M		3148	Communication number The communication number.	M an..512
M		3155	Communication channel qualifier Code identifying the type of communication channel being used.	M an..3
			EM Electronic mail	
			TE Telephone	

Group: **LIN** Segment Group 25: Line Item
Position: 0930
Group:
Level: 1
Usage: Conditional (Optional)
Max Use: 200000
Purpose: A group of segments providing details of the individual ordered items. This Segment group may be repeated to give sub-line details.

Segment Summary

	Pos. No.	Seg. ID	Name	Req. Des.	Max. Use	Group: Repeat
M	0940	LIN	Line Item	M	1	
	0950	PIA	Additional Product Id	C	25	
	0980	QTY	Quantity	C	10	
	1020	MOA	Monetary Amount	C	10	
	1180		Segment Group 28: Price Details	C		25

Segment: **LIN** Line Item
Position: 0940 (Trigger Segment)
Group: Segment Group 25 (Line Item) Conditional (Optional)
Level: 1
Usage: Mandatory
Max Use: 1
Purpose: A segment identifying the line item by the line number, and additionally, identifying the product or service ordered. Other product identification numbers e.g. Buyer product number and GTIN number can be specified within the following PIA segment.

Comments:

Notes: Example:

 GTIN (EAN number):
 LIN+1++5713275786537:EN'

Data Element Summary

	<u>Data Element</u>	<u>Component Element</u>	<u>Name</u>	<u>Attributes</u>
	1082		LINE ITEM NUMBER Serial number designating each separate item within a series of articles.	C n..6
Not Used	1229		ACTION REQUEST/NOTIFICATION, CODED	C an..3
	C212		ITEM NUMBER IDENTIFICATION Goods identification for a specified source.	C
		7140	Item number A number allocated to a group or item.	C an..35
		7143	Item number type, coded Identification of the type of item number. EN International Article Numbering Association (EAN)	C an..3

Segment: **PIA** Additional Product Id
Position: 0950
Group: Segment Group 25 (Line Item) Conditional (Optional)
Level: 2
Usage: Conditional (Optional)
Max Use: 25
Purpose: A segment providing either additional identification to the product specified in the LIN segment (Buyer number and GTIN).

Comments:

Notes: Example:

Suppliers article number:
PIA+1+10085435:SA'

Data Element Summary

	<u>Data Element</u>	<u>Component Element</u>	<u>Name</u>	<u>Attributes</u>
M	4347		PRODUCT ID. FUNCTION QUALIFIER Indication of the function of the product code. 1 Additional identification	M an..3
M	C212		ITEM NUMBER IDENTIFICATION Goods identification for a specified source.	M
		7140	Item number A number allocated to a group or item.	C an..35
		7143	Item number type, coded Identification of the type of item number. SA Supplier's article number	C an..3

Segment: **QTY** Quantity
Position: 0980
Group: Segment Group 25 (Line Item) Conditional (Optional)
Level: 2
Usage: Conditional (Optional)
Max Use: 10
Purpose: A segment identifying the ordered quantity.
Comments:
Notes: Example:
 QTY+21:30'

Data Element Summary

	<u>Data Element</u>	<u>Component Element</u>	<u>Name</u>	<u>Attributes</u>
M	C186		QUANTITY DETAILS Quantity information in a transaction, qualified when relevant.	M
M		6063	Quantity qualifier Code giving specific meaning to a quantity. 21 Ordered quantity	M an..3
M		6060	Quantity Numeric value of a quantity.	M n..15

Segment: **MOA** Monetary Amount
Position: 1020
Group: Segment Group 25 (Line Item) Conditional (Optional)
Level: 2
Usage: Conditional (Optional)
Max Use: 10
Purpose: A segment specifying any monetary amounts relating to the product e.g. item amount, insurance value, customs value.
Comments:
Notes: Example:
 MOA+66:3448,5'

Data Element Summary

	<u>Data Element</u>	<u>Component Element</u>	<u>Name</u>	<u>Attributes</u>
M	C516		MONETARY AMOUNT Amount of goods or services stated as a monetary amount in a specified currency.	M
M		5025	Monetary amount type qualifier Indication of type of amount. 66 Goods item total	M an..3
		5004	Monetary amount Number of monetary units.	C n..18

Group: **PRI** Segment Group 28: Price Details
Position: 1180
Group: Segment Group 25 (Line Item) Conditional (Optional)
Level: 2
Usage: Conditional (Optional)
Max Use: 25
Purpose: A group of segments identifying the relevant pricing information for the goods or services ordered.

Segment Summary

	Pos. No.	Seg. ID	Name	Req. Des.	Max. Use	Group: Repeat
M	1190	PRI	Price Details	M	1	

Segment: **PRI Price Details**
Position: 1190 (Trigger Segment)
Group: Segment Group 28 (Price Details) Conditional (Optional)
Level: 2
Usage: Mandatory
Max Use: 1
Purpose: A segment to specify the price type and amount. The price used in the calculation of the line amount will be identified as 'price'.
Comments:
Notes: Example:

Gross price:
PRI+AAB:114,95:CA'

Data Element Summary

<u>Data Element</u>	<u>Component Element</u>	<u>Name</u>	<u>Attributes</u>
M	C509	PRICE INFORMATION Identification of price type, price and related details.	C
	5125	Price qualifier Identification of a type of price. AAB Calculation gross	M an..3
	5118	Price The monetary value associated with a purchase or sale of an article, product or service.	C n..15
	5375	Price type, coded Code identifying the type of price of an item. CA Catalogue	C an..3

Segment: **UNS** Section Control
Position: 2090
Group:
Level: 0
Usage: Mandatory
Max Use: 1
Purpose: A service segment placed at the start of the summary section to avoid segment collision.
Comments:
Notes: Example:
 UNS+S'

Data Element Summary

	<u>Data Element</u>	<u>Component Element</u>	<u>Name</u>	<u>Attributes</u>
M	0081		SECTION IDENTIFIER	M a1
			S	Detail/summary section separation

Segment: **CNT** Control Total
Position: 2110
Group:
Level: 1
Usage: Conditional (Optional)
Max Use: 10
Purpose: A segment by which control totals may be provided by the sender for checking by the receiver.

Comments:

Notes: Example:

CNT+2:285'

Data Element Summary

	<u>Data Element</u>	<u>Component Element</u>	<u>Name</u>	<u>Attributes</u>
M	C270		CONTROL	M
			Control total for checking integrity of a message or part of a message.	
M		6069	Control qualifier	M an..3
			Determines the source data elements in the message which forms the basis for 6066 Control value.	
			2 Number of line items in message	
M		6066	Control value	M n..18
			Value obtained from summing the values specified by the Control Qualifier throughout the message (Hash total).	

Segment: **UNT** Message Trailer

Position: 2160

Group:

Level: 0

Usage: Mandatory

Max Use: 1

Purpose: A service segment ending a message, giving the total number of segments in the message and the control reference number of the message.

Comments:

Notes: Example:

UNT+364+0042'

Data Element Summary

	<u>Data Element</u>	<u>Component Element</u>	<u>Name</u>	<u>Attributes</u>
M	0074		NUMBER OF SEGMENTS IN A MESSAGE Control count of number of segments in a message.	M n..6
M	0062		MESSAGE REFERENCE NUMBER Unique message reference assigned by the sender.	M an..14

Segment: **UNZ** Interchange Trailer
Position: 2190
Group:
Level: 0
Usage: Conditional (Optional)
Max Use: 1
Purpose: To end and check the completeness of an interchange.
Comments:
Notes: Example:
 UNZ+1+MD04408868'

Data Element Summary

	<u>Data Element</u>	<u>Component Element</u>	<u>Name</u>	<u>Attributes</u>
M	0036		INTERCHANGE CONTROL COUNT Count either of the number of messages or, if used, of the number of functional groups in an interchange.	M n..6
M	0020		INTERCHANGE CONTROL REFERENCE Unique reference assigned by the sender to an interchange.	M an..14

EDIFACT Examples

Standard purchase order:

```
UNA:+,? '  
UNB+UNOC:3+5790000691104:14+5790000000000:14+200916:0755+1849466'  
UNH+0001+ORDERS:D:96A:UN:EAN008 '  
BGM+220+1849466 '  
DTM+137:20200916:102 '  
DTM+2:20200921:102 '  
RFF+PD:2008678 '  
RFF+UC:IM66666 '  
NAD+BY+IM66666::9 '  
NAD+SU+5790000000000::9 '  
NAD+IV+5790000691104::9 '  
LIN+1++57132350740968:EN '  
PIA+1+10017729:SA '  
QTY+21:24 '  
MOA+66:7911,6 '  
PRI+AAB:329,65:CA '  
UNS+S '  
CNT+2:1 '  
UNT+16+0001 '  
UNZ+1+1849466 '
```

Drop ship order:

```
UNA:+.? '  
UNB+UNOC:3+5790000691104:14+5790000000000:14+200912:0525+1846401+++1 '  
UNH+0001+ORDERS:D:96A:UN:EAN008 '  
BGM+640+1846401 '  
DTM+2:20200911:102 '  
DTM+137:20200911:102 '  
RFF+UC:IM66666 '  
NAD+BY+IM66666 '  
NAD+SU+5790000000000::9 '  
NAD+IV+5790000691104::9 '  
NAD+DP+++Viggo Andersen+Bygaden 45+Aarhus C++8000+DK '  
CTA+LB+:Viggo Andersen '  
COM+27209875:TE '  
COM+viggo.a@gmail.com:EM '  
LIN+1++5722000128764:EN '  
PIA+1+12211:SA '  
QTY+21:1 '  
MOA+66:174.5 '  
PRI+AAB:174.5:CA '  
UNS+S '  
CNT+2:1 '  
UNT+20+0001 '  
UNZ+1+1846401 '
```