

EDI Integration for SAP

Full Integration to Your Customers and Suppliers

TrueCommerce is a market leader when it comes to integrating EDI into all SAP ERP versions, incl. SAP HANA and SAP Business One.

Our team of dedicated SAP ERP integration experts have 25+ years of experience advising on, implementing, and supporting SAP ERP projects. Our customer portfolio includes a wide range of large Nordic brands, such as **Salling Group**, **Royal Greenland**, and **Sanistål** that all rely on the timely, accurate and efficient exchange of critical documents between their trading partners and their SAP ERP system.

TrueCommerce EDI will be integrated in collaboration with your SAP consultant. You will be connected directly to your trading partners, so you can exchange business documents fast and correctly.

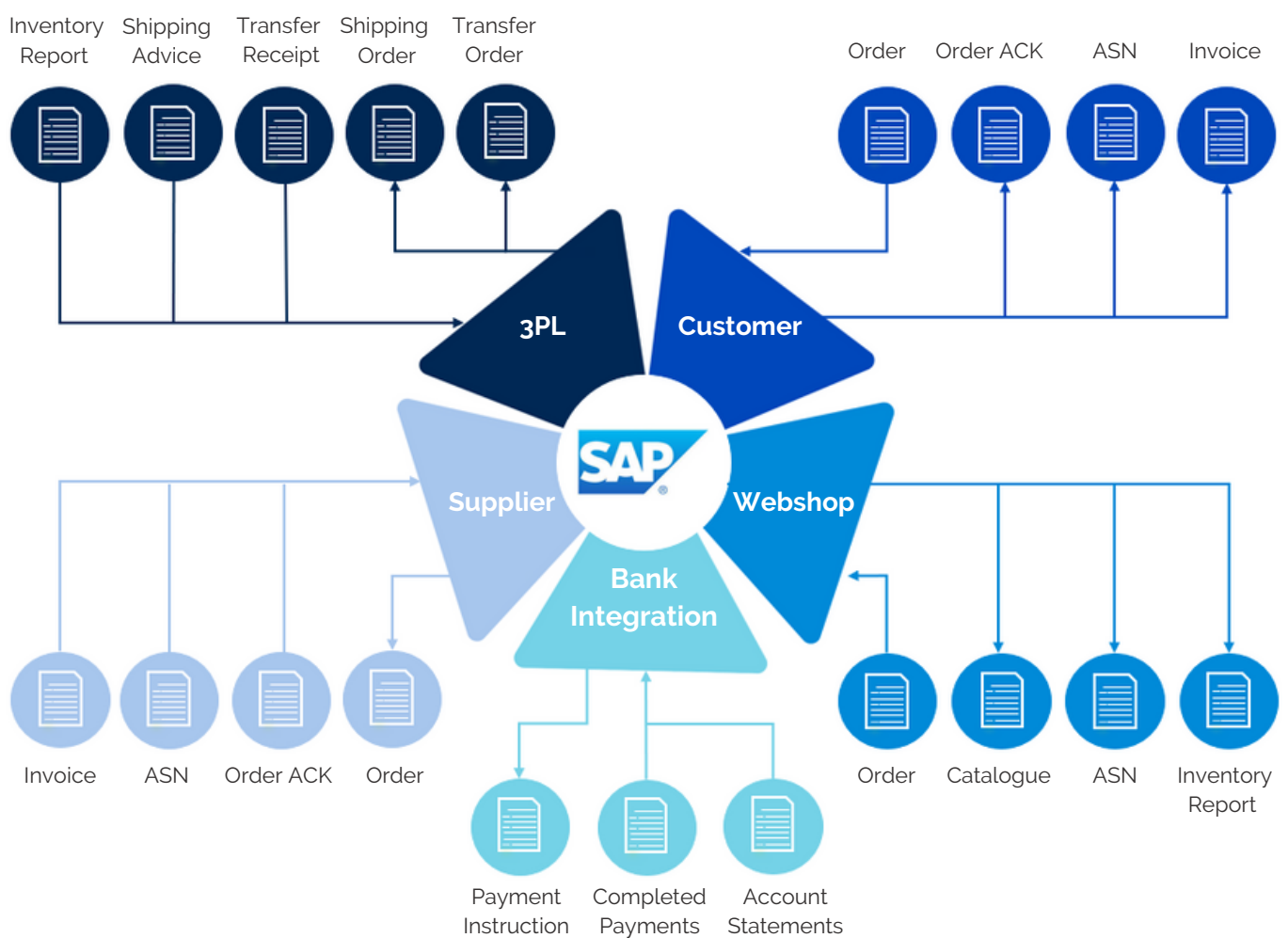
TrueCommerce EDI for SAP ERP is ideally suited to wholesalers and manufacturers that need to streamline and automate the processing of large volumes of sales orders, invoices, purchase order acknowledgments and advanced shipping notices (ASNs).

Benefits:

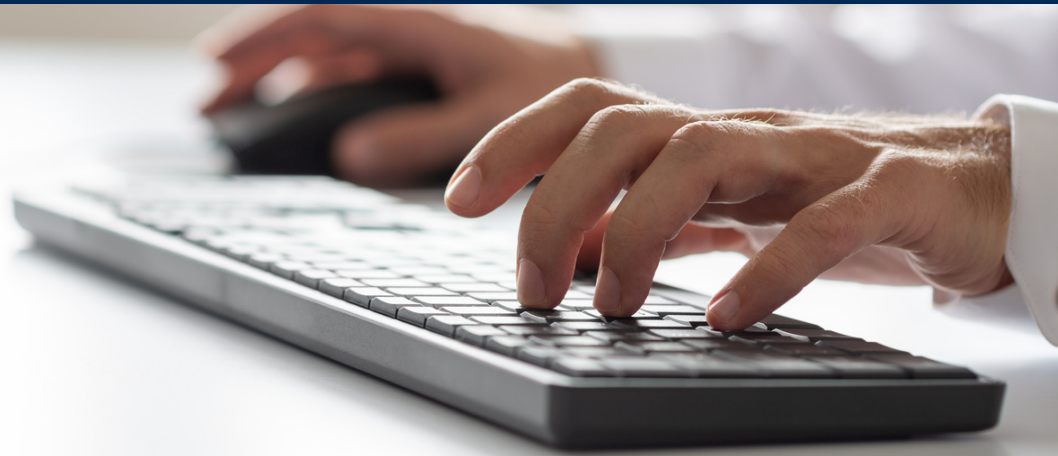
- ✓ No time-consuming manual workflows
- ✓ Fast and correct exchange of large amounts of data with your trading partners
- ✓ Minimal or no need for internal maintenance, monitoring and support
- ✓ Improved customer satisfaction and increased sales

With an EDI integration to SAP, you can:

- Receive and send purchase orders, order confirmations, delivery notes and invoices automatically.
- Ensure more precise data and avoid errors associated with manual retyping.
- Streamline order handling and give your team full transparency into the supply chain from ordering to invoicing.
- Get access to TrueCommerce's extensive global trading network, where you can exchange all messaging formats and connect to new trading partners as your business grows.
- Integrate your B2B webshop with SAP.



This illustration shows the typical document flow between the company and its customers, suppliers, webshop, 3PL warehouse and the bank.



TrueCommerce EDI Managed Service

Your TrueCommerce EDI solution will be delivered as a Managed Service, which is a key element of the value we create for our customers. We remove all complexity from EDI by offering complete monitoring, support, and maintenance of your solution on your behalf. Our local experts will act as part of your team, providing guidance and recommendations on the digitalization of key areas of your business.

TrueCommerce is strong in supplier onboarding, and we can reach out to your suppliers on your behalf to help them get started exchanging electronic business documents with you.

Our Managed Service Platform quickly and efficiently converts the documents you exchange with your trading partners into the recipient's required format. With our seamless integration into the SAP ERP system, you will eliminate the need for manual data entry.

Some of the key benefits of the TrueCommerce Managed EDI Service are:

- ✓ Access to a global trading partner network, most notably:
 - 180,000+ pre-connected companies on the TrueCommerce Network.
 - **The VANS Network**: TrueCommerce collaborates with 80+ other EDI & network providers across Europe and globally, enabling our respective customers to reach a combined network of more than one million potential trading partners.
 - **TrueCommerce is a PEPPOL Gateway**: PEPPOL is a Pan-European, secure, standardized infrastructure for exchanging digital documents, especially invoices, between private companies and the public sector. To send documents via PEPPOL, your company must be connected to a PEPPOL Access Point, such as TrueCommerce. Read more about **PEPPOL**.

- ✓ A dedicated team of experts taking full responsibility for the implementation process and daily operational tasks.
- ✓ A stable and reliable solution with an uptime of 99.8%.
- ✓ Proactive monitoring of your solution ensuring a timely, accurate and efficient exchange of digital documents between you and your trading partners. TrueCommerce will handle any errors on your behalf; in many cases, we won't need to involve you at all.

E-Invoicing & Tax Compliance

Tax authorities worldwide continue to impose new requirements to increase controls on business-to-business transactions.

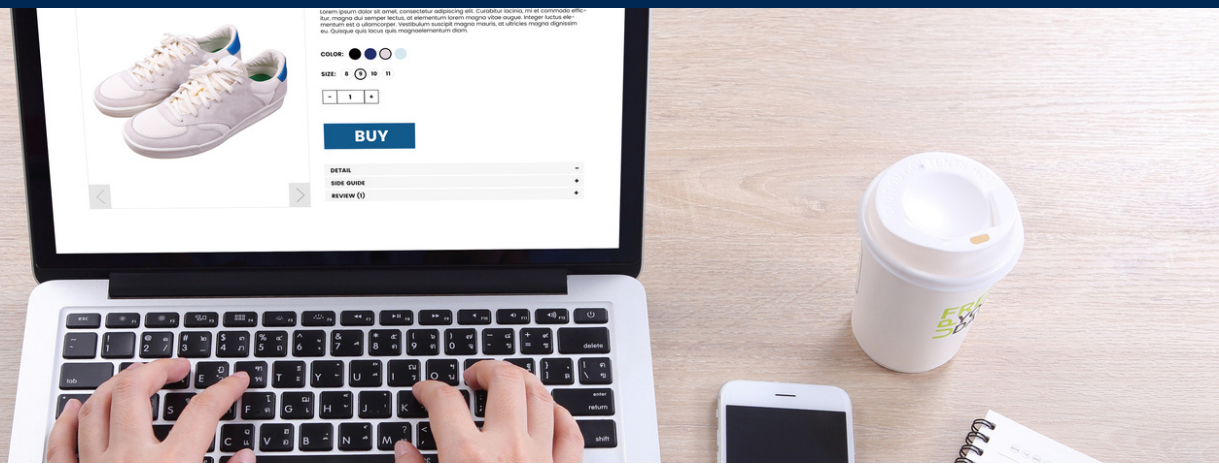
In some countries, invoices must be passed via an authority for verification. This setup is referred to as Continuous Transaction Controls (CTC).

CTC aims to increase efficiency, cut costs, and fight fraud. This is creating huge pressure for businesses to implement global e-invoicing in a consistent, scalable, and cost-effective manner.

The topic of efficient, timely and compliant electronic invoicing is particularly relevant for global and multinational companies. If your organization has subsidiaries in multiple countries, especially within Europe, you need to start thinking about how to automate, centralize and streamline the processes required to meet periodic VAT reporting obligations.

Through our Managed EDI Service, TrueCommerce will help your European subsidiaries send compliant e-invoices while keeping you abreast of the development of new local requirements.





Make Your Products Available to Your Customers 24/7 with a B2B Webshop

TrueCommerce offers a B2B webshop, allowing you to give your customers the best possible buying experience 24/7 to increase sales, improve efficiencies and reduce costs.

TrueCommerce's B2B webshop has been designed to integrate with all your other business systems, e.g., your accounting system, inventory management system or order management system. This way, you can ensure your new webshop is an integrated part of your existing business.

With a B2B webshop, you can give your B2B customers a B2C experience, but with the advanced functionality that B2B sales require. The solution is fully scalable and designed to meet your needs today and, in the future, as your online business grows.

Would you like to know more about the benefits of a B2B webshop?
[Click here](#)

Why TrueCommerce

TrueCommerce is the leading provider of EDI in the Nordics. We help retailers, wholesalers, manufacturers, and transportation companies achieve more efficient trading with suppliers and customers.

Our core business is EDI, which enables you and your trading partners to exchange orders, invoices, dispatch advice, and more with the highest possible data quality. We also offer a range of additional supply chain solutions, such as vendor managed inventory (VMI), the preferred solution among enterprises for stock management, replenishment and order processing.

TrueCommerce acts as your trusted advisor on EDI and your overall digitalization strategy. We value long-term strategic partnerships with our customers, advising you on integrating your EDI, ERP system and other solutions to optimize your trading processes and support future growth.

TrueCommerce was founded in 1987. Today, we are a global organization with teams of digital experts across Europe, North America and Asia. We have a strong presence in the Nordics, with 85 employees based in our Copenhagen office.

Our highly skilled onboarding team will seamlessly manage onboarding your customers and suppliers, including all dialogue/screening, setup (mapping) and tests. We will also work with you on creating a project plan and timeline.

TrueCommerce's solutions and operations comply with ISAE 3402 to protect our customers' data fully and to ensure that our solutions are part of a solid, proven infrastructure.



Would you like to know more about EDI, Supplier Onboarding, Vendor Managed Inventory (VMI), and Global Digital Document Exchange?

[Click here to read our whitepaper "EDI for Enterprises"](#)

Contact TrueCommerce Denmark at +45 45 82 16 00 or send an e-mail to marketingdk@truecommerce.com

www.truecommerce.com

© Copyright TrueCommerce Danmark. All rights reserved

TrueCommerce™