

TrueCommerce Scheduler Automates Everyday Tasks for On-Premise and Web-based EDI Users



BENEFITS

More Connected. More Supported. More Prepared for What's Next.

TrueCommerce Scheduler automates everyday tasks to improve efficiency, reduce manual effort, and enhance the value of your EDI solution.

- ▶ Automate all integrated transactions to and from Transaction Manager with scheduled imports and exports
- ▶ Flexible scheduling options available
- ▶ Schedule events based on customer or EDI transaction type
- ▶ Built-in process controls ensure data accuracy
- ▶ Set-up automatic e-mail alerts for specific people when errors are received for predefined events

TrueCommerce Scheduler allows users to quickly and easily schedule automated events in TrueCommerce Transaction Manager™ – saving time and manual effort every day, while improving business efficiency.

Available as an add-on solution, TrueCommerce Scheduler makes it easy to align scheduled events with your business processes and customer requirements. You can use it to automate a variety of tasks such as sending, receiving, importing and exporting transactions. Events can be scheduled based on one or more selected customers or EDI transaction types, and can run at specified time intervals. For example, if you are tasked with billing your customers on the same day every week, you could automate this process by using TrueCommerce Scheduler, and invest your time in other areas of your growing business. Once the task of processing invoices has been scheduled, they will automatically be imported on the day you specify and sent through Transaction Manager; without the need for manual interaction.

Scheduler will ensure that your customers are billed in a timely manner, and you'll be confident in knowing that each transaction is accurate. Built-in process controls, such as exception handling and e-mail notifications, ensure the timely and accurate delivery of all your automated transactions. The solution automatically validates outbound transactions against trading partner maps, to make sure that all required data has been entered prior to sending transactions to a customer– which means fewer errors and chargebacks.

In addition, specific users can receive e-mail alerts based on a wide range of specific events. If your business typically receives purchase orders at various times, for instance, you can easily configure Scheduler to automatically export new orders from your TrueCommerce EDI solution to your business system hourly, while notifying appropriate staff of the new orders.

TRUECOMMERCE SCHEDULER FEATURES AND BENEFITS

Saves Your Business Time, Effort and Money Every Day

- Scheduler works anytime – so you don't have to!
- Automates the exchange of business documents for reduced manual effort
- Automatically import and export scheduled documents with your business system without the need to access or open Transaction Manager – giving you more time to focus on other key areas of your business

Comprehensive and Flexible Event Scheduling Options

- Quickly and easily schedule events to align with your business processes and the needs of your customers
- Automate events based on one or more customers, or by one or more EDI transaction type (e.g., when you receive a purchase order) to precisely meet your needs
- Schedule events by minute, hour and/or day intervals to ensure timely and efficient task completion

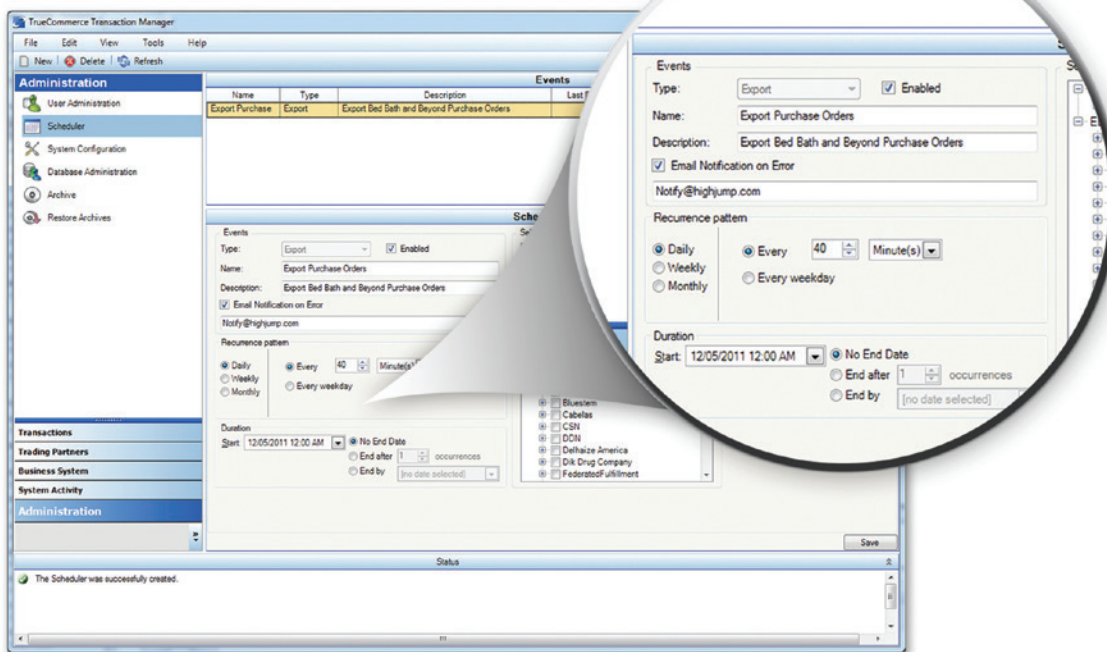
Built-in Process Controls

- Send e-mail alerts to specific people in response to specific events, such as error notifications or other exceptions – to streamline the timely and accurate delivery of all your automated transactions
- Automatic validation of outbound EDI transactions against trading partner maps ensures that all required data has been entered before transactions are sent to customers, reducing errors and chargebacks

Robust, Proven Business System Integration

- Adds value to your TrueCommerce EDI solution by automating inbound and outbound transactions with your business or accounting software
- Generate or retrieve flat files at a specific location on your network for integrations that leverage a flat-file approach

*Certain features may not apply for all Business Systems.



ABOUT TRUECOMMERCE

TrueCommerce is the most complete way to integrate your business across the supply chain, integrating everything from EDI to inventory management, to fulfillment, to digital storefronts and marketplaces, to your business system and to whatever comes next. That's why thousands of companies across various industries rely on us.

TrueCommerce.
Do business in every direction.

THE TRUECOMMERCE TEAM IS HERE TO HELP!

If you have any questions regarding TrueCommerce, or how our solutions apply to your business, our passionate, customer focused team is here for you.

Call us today at **888.430.4489**

www.truecommerce.com



TrueCommerce™ | Do business in every direction

©Copyright 2019 True Commerce, Inc. All rights reserved. Reproduction in whole or in part without permission is prohibited, and information contained herein is subject to change without notice. TrueCommerce® is a registered trademark of True Commerce, Inc. All other trademarks are property of their respective owners.